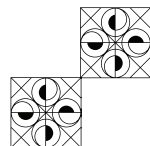




PENNSYLVANIA ACADEMY
OF THE FINE ARTS



CONTINUING EDUCATION PROGRAMS

ART CLASSES FOR ADULTS AND HIGH SCHOOL STUDENTS

Spring 2015



WE
MAKE
ARTISTS

pafa.edu

Pennsylvania Academy of the Fine Arts

CONTINUING EDUCATION PROGRAMS

Join our community of dedicated artists of all ages and skill levels



Photo: Tom Crane

Founded in 1805 as the nation's first school and museum of fine arts, the Pennsylvania Academy of the Fine Arts (PAFA) promotes the transformative power of art and art making. For over 200 years, our close-knit community of faculty, critics, scholars, curators, museum-professionals, and alumni have created a home for contemporary artists to reinvent tradition and make their own mark on the future.

As part of this mission, PAFA Continuing Education (CE) Programs offer a diverse array of studio art courses, workshops and programs for adults and high school students, open to all

levels of ability, from absolute beginner through advanced artist. Whether you've never taken an art class before, are returning after a long absence, or are preparing a portfolio for art school, PAFA CE has something for you!

WE'RE HERE TO HELP!

Please call 215-972-7632 or write continuinged@pafa.edu for more information or assistance in course selection.



PENNSYLVANIA ACADEMY
OF THE FINE ARTS

CONTINUING EDUCATION PROGRAMS

128 North Broad Street
Philadelphia, PA 19102
t 215-972-7632 f 215-569-0153
e continuinged@pafa.edu
www.pafa.edu/CE

@PAFAcademy

BENEFITS OF PAFA CE

- A stellar faculty of practicing, professional artists who enthusiastically encourage and support their students. *Look for complete faculty biographies on our website, pafa.edu.*
- A thriving Center City Philadelphia location, only blocks away from the city's major art museums including the Barnes Foundation, Philadelphia Museum of Art and Rodin Museum.
- Convenient connections to mass transit with plenty of discounted parking nearby.
- Access to the PAFA campus, including the breathtaking Cast Hall, Arcadia Fine Arts Library and on-site Blick Art Materials store.
- Free admission to the PAFA Museum, featuring a renowned permanent collection of American art and special exhibitions. *Visit pafa.org for more information.*

**SCHOLARSHIP
OPPORTUNITIES AVAILABLE**
See page 35.

TABLE OF CONTENTS

Master Classes	4
Pre-College Programs	8
Evening Courses	10
Weekday Courses	14
Weekend Courses	22
Workshops, Lectures and Seminars	25
Schedule At-A-Glance	32
Registration Information	34
Academic Programs	38

On the cover: Daniel Greene,
Self-Portrait - Wall St. Station (detail),
Oil on linen, 40 x 50 in., private collection.



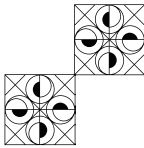
Theodore Xaras

CONTINUING EDUCATION OPEN HOUSE

FREE BY RSVP!
Saturday, April 11
10 a.m. – 1 p.m.

Interested in taking a class or trying something new, but don't know where to start? Then join us on Saturday, April 11, and find out what PAFA CE can do for you! Meet our friendly faculty and staff, view demonstrations on painting, drawing, printmaking and sculpture, tour PAFA's historic Cast Hall, drawing and painting studios and state-of-the-art print and sculpture shop facilities. You can even have your portfolio reviewed by PAFA Admissions staff (optional)! Refreshments will be served!

RSVP THROUGH THE CE OFFICE:
215-972-7632 or continuinged@pafa.edu



MASTER CLASSES AND WORKSHOPS

IN 609DM WOODCUT WORKSHOP WITH DAN MILLER PRINTMAKING

Open to All Levels

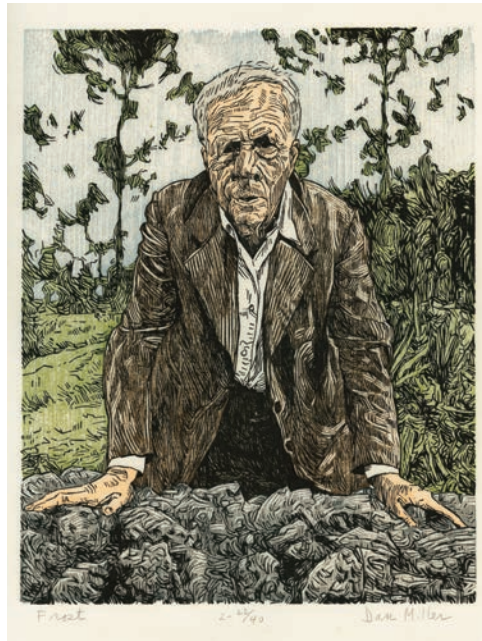
Don't miss the opportunity to work with Dan Miller, a member of the PAFA faculty for almost 50 years and a master of woodblock printing. This two-day workshop will begin with a printing demonstration and a slide lecture illustrating the vast historical variety within the woodcut experience. Studio activity will focus on designing and cutting the woodblock, and printing techniques in black-and-white and color. Attention will be given to equipment usage and to paper selection and employment, with emphasis on hand-printing.

Saturday and Sunday, February 28 & March 1
(Snow dates: March 7 & 8)

9 a.m. – 5 p.m.

Tuition: \$395

Register by: February 6



Dan Miller, *Frost*, Color woodcut, 16 1/2 x 21 in.

IN609EK PLEIN AIR PAINTING IN BERMUDA ALL MEDIA

Open to All Levels

Join PAFA faculty Joe Sweeney and Bermudian watercolorist Jill Amos Raine for a plein air painting class in beautiful St. George's, Bermuda. Learn to paint efficiently out-of-doors with tips on choosing a prime location, reading the weather and light, and setting up a seascape palette. Featuring demonstrations and lectures

on painting surfaces, materials, mediums, compositional drawing and color studies. All media welcome, including oil, acrylic, pastel, and watercolor. Daily painting times will be broken up to utilize morning and evening light. Take advantage of the afternoon break to explore the picturesque surroundings or relax on the beach! Includes a visit to the Masterworks Museum of Bermuda Art in Paget to view works by Charles Demuth, Winslow Homer, Georgia O'Keeffe, Andrew Wyeth, and many others who made the Bermuda pilgrimage.

Monday – Friday, May 18 - 22

Tuition: \$695

Register by: April 17

(no refunds after this date)

Students are responsible for their own airfare and accommodation. Discounted accommodation is available. **For more information, visit joesweeneyart.com.**



IN 609DG MASTER CLASS WITH DANIEL GREENE OIL PAINTING & PASTEL

Open to All Levels

PAFA is pleased to present Daniel E. Greene, N.A., one of America's leading figure, portrait and still-life painters and internationally acclaimed pastelist, for a four-day portrait painting intensive. His portrait subjects have included leaders of government, banking, education, and industry including First Lady Mrs. Eleanor Roosevelt, author Ayn Rand, and publisher William Randolph Hearst. His work hangs in more than 700 public and private collections including the Metropolitan Museum of Art. He has taught at the Art Students League and at the National Academy of Design. Mr. Greene is the author of two definitive pastel instruction books, *Pastel* and *The Art of Pastel*, which have been translated into eight languages.

Mr. Greene's Master Class is designed to provide a foundation of fundamental and advanced professional information to help artists successfully paint portraits. The class will begin with a Thursday evening demonstration followed by three full days working from models under constant personal direction by Mr. Greene.



Photo: S. Farley

Limited enrollment ensures that each artist will receive careful, individual instruction, so that all participants will benefit from Mr. Greene's years of experience and willingness to share. **Visit pafa.edu/MasterClasses for the complete description and schedule.**

Thursday through Sunday, March 26 – 29
9 a.m. – 5 p.m.

Tuition: \$1,200

Register by: February 27
(no refunds after this date)

DANIEL GREENE STUDIO DEMONSTRATIONS

Mr. Greene will present two demonstrations on the professional techniques of painting a portrait in oil and pastel, with step-by-step, detailed instruction. These demonstrations are free to registered Master Class students, and are available to the public for an admission charge of \$50 each. Advanced registration required. Space is limited.

IN 609PO DANIEL GREENE PORTRAIT PAINTING IN OIL DEMONSTRATION

Thursday, March 26, 7 – 10 p.m.

Tuition: \$50

IN 609PP DANIEL GREENE PORTRAIT IN PASTELS DEMONSTRATION

Saturday, March 28, 7 – 10 p.m.

Tuition: \$50

CALL 215-972-7632 TO REGISTER



**IN 609SS MASTER CLASS WITH STUART SHILS:
VOYAGES THROUGH PERCEPTUAL HISTORY
DRAWING & PAINTING**

Open to Intermediate/Advanced Artists

Led by renowned painter and PAFA alum, Stuart Shils, this workshop will examine the foundation structure of painting from Giotto to David Hockney. Working in the studio from reproductions including historical and 20th century masters, move through a closely guided series of fascinating drawing and painting exercises to understand that abstraction – composition with color and shape – is THE foundation, the great engine behind all painting. Significant emphasis will also be placed on drawing interpretively and inventively. This is NOT a “copy” class, replicating the superficial appearance of paintings; but rather, going deeper to see what they are made of and learning to use graphic shorthand to describe both what is there and also how we see it.

**Friday, Saturday and Sunday, April 17, 18 & 19
9 a.m. – 5 p.m.**

Tuition: \$950

Register by: March 20

(no refunds after this date)



Stuart Shils, 2014, *Still Life with Yellow, Green and Blue*, Acrylic on museum board, 10 x 10 in.

PUBLIC LECTURE:

Thursday, April 16, 6 - 7:30 p.m.
Hamilton Auditorium/
Historic Landmark Building
FREE by RSVP to the CE office:
215-972-7632



**IN 609CL STILL LIFE WORKSHOP WITH CHRISTINE LAFUENTE
OIL PAINTING**

Open to All Levels

Brooklyn-based painter and PAFA alum Christine Lafuente considers her paintings “poetic responses to visual experience.” Responding to the still life motif, learn how to build an oil painting directly, with the emphasis on color. The workshop will begin with a three-hour painting demonstration followed by painting sessions in which students will be guided through a series of focused procedures: composing a painting and establishing tonal design, mixing color, achieving harmony and palette organization, applying large color masses, and using principles of oil viscosity to build form into wet-into-wet painting.

Saturday and Sunday, May 2 & 3

9 a.m. – 5 p.m.

Tuition: \$595

Register by: April 3

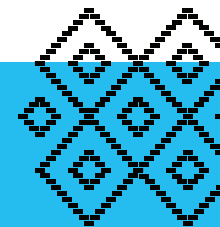
(no refunds after this date)



Christine Lafuente, 2014, *Peonies in Summer*, Oil on linen, 10 x 10 in.

PUBLIC LECTURE:

Friday, May 1, 6 - 7:30 p.m.
Hamilton Auditorium/
Historic Landmark Building
FREE by RSVP to the CE office:
215-972-7632



VISIT PAFA.EDU/MASTERCLASSES

for more information on these and other upcoming classes



**IN609AR AN ARTISTS' RETREAT
WITH ANNA RHODES
FIRST IMPRESSIONS:
DRAWING INTO PAINTING FOR
THE INQUISITIVE BEGINNER AND
THE SEASONED ARTIST
DRAWING & GOUACHE PAINTING**

Open to All Levels

PAFA and Anna Rhodes join together to create an extraordinary experience! An Artists' Retreat is an in-depth, concentrated art course designed to encourage confident creativity. Gain a solid understanding of how to develop an image or idea through experimental and traditional drawing and painting techniques, and learn to combine the skills, intuition and freedom needed to create unique works that reflect individual vision. Capture essence, luminosity and mystery with gouache, graphite, and mixtures of mediums

on prepared panels and paper. Each day in the studio is enhanced by demonstrations focused on color mixing, paint application and layering techniques, composition, individual and group discussion and films.

Friday through Monday, May 15 - 18

Tuition: \$850 + \$85 studio fee

(includes catered lunch each day)

For more information and to register visit:

www.anartistsretreat.com



PRE-COLLEGE PROGRAMS FOR HIGH SCHOOL STUDENTS

SATURDAY CLASSES

Saturday classes offer teens a valuable opportunity to develop and hone their skills under the guidance of PAFA faculty. All levels welcome.

DR 710EP DRAWING AND PAINTING FOR HIGH SCHOOL STUDENTS

Roger Chavez

Room 1023/Samuel M.V. Hamilton Building

Ideal for teens who want to further their drawing and painting skills and develop a strong body of work for their portfolios. Students will work from still life, PAFA's historic cast collection, and life

models to learn principles of composition, value, perspective, color mixing and paint handling.

NOTE: *This class will utilize nude models.*

10 weeks, Saturdays, January 31 – April 4

10 a.m. – 1 p.m.

Tuition: \$415 for 1.0 undergraduate credit or non-credit

Register by: January 23

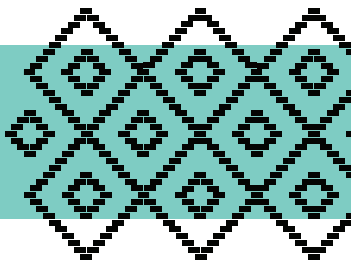
SCHOLARSHIPS AVAILABLE!

Visit pafa.edu/HighSchool for more information and to download an application. Application Deadline: **Friday, January 16**

8



9



PAFA ADMISSIONS INFORMATION SESSION & PORTFOLIO REVIEW

Interested in PAFA's full-time programs?

Meet with PAFA Admissions staff to discuss the benefits and surprising accessibility of PAFA's degree and certificate programs, and explore which program will best serve your needs. Free and open to high school students and adults interested in pursuing PAFA's full-time programs (*see page 38*).

Saturday, January 31

RSVP TO THE CE OFFICE: 215-972-7632



SUMMER ACADEMY FOR HIGH SCHOOL STUDENTS 2015

July 6 – August 7, 2015

PAFA's Summer Academy is the definitive program for talented and motivated high school students: a five-week, college-level art making experience in the nation's first and premier school of fine art.

- Rigorous courses in drawing, painting, sculpture, printmaking and illustration taught by PAFA's exceptional faculty
- Field trips to the museums and galleries of Philadelphia, New York and Washington, D.C.
- A culminating student exhibition in PAFA's museum, including a reception and awards ceremony

- A head start on preparing your portfolio for applying to art school
- The opportunity to earn four college-level credits
- The option for an Admissions portfolio review for pre-approval for your PAFA college application (*additional materials required*)
- A \$5,000 Next Step Scholarship issued to all Summer Academy alums who enroll in PAFA's Certificate or BFA programs.

FOR MORE INFORMATION,
visit pafa.edu/summeracademy



EVENING COURSES

SCHEDULE*

- 3 hours once a week for 12 weeks
- **No Classes held during Spring Break, March 9 – 15***

 Denotes courses that meet Core Curriculum first-level requirements. *See page 21.*

TUITION*

- \$625 for 1.0 undergraduate credit
- \$495 for non-credit
- Additional lab and materials fees where indicated

**Unless otherwise indicated*

MONDAY EVENINGS

January 26 – April 20
Register by: January 9

6:30 – 9:30 p.m.

SC 616ED THE FIGURE AS A POINT OF DEPARTURE

Colleen O'Donnell

Room 740/Samuel M.V. Hamilton Building

Work from the human figure as a vehicle for personal expression in clay, drawing media and/or painting with a limited palette. Explore how different media inform your understanding of the subject and each other. Clay modeling, basic drawing/painting techniques and mixed media processes will be covered. The work of historic and contemporary artists who have used the human figure as the basis of their art in a range of media will be addressed, including Edgar Degas, Auguste Rodin, Henry Moore, Alberto Giacometti, and Kiki Smith. Suitable for students at all levels.

DR 619EI PENCIL DRAWING WITH WATERCOLOR AND INK SHORT COURSE

Hiro Sakaguchi

Room 610/Samuel M.V. Hamilton Building

Investigate the dynamic possibilities and subtle intensity of utilizing watercolor and ink in your drawings. Combine the crisp, gestural mark of the pencil with delicate, evocative washes of transparent tone and color to produce vibrant mixed media work in the tradition of Cézanne and Rodin and with reference to contemporary

drawing. Students will learn graphite and pen-and-ink drawing techniques as well as watercolor and wash painting methods. Basic drawing experience required.

Basic drawing experience required.

**10 weeks, February 2 – April 13
(no class on March 9)**

**Tuition: \$395 non-credit or
\$525 for 1.0 undergraduate credit**

Register by: January 23

PT 616SS OIL PAINTING AND GLAZING SHORT COURSE

Gilbert Lewis

Room 1010/Samuel M.V. Hamilton Building

Learn the traditional oil painting technique of combining transparent glazes and semi-opaque layers to achieve a luminosity of color and depth of surface that is unattainable solely through direct, opaque painting. Learn to apply the technique to your choice of numerous engaging still life arrangements in the PAFA Still Life Room. The creative uses of this time-honored method will be discussed and demonstrated with emphasis on contemporary relevance as well as historical reference. For those with prior painting experience.

6 weeks, March 16 – April 20

Tuition: \$275 non-credit

Register by: March 6

TUESDAY EVENINGS

January 20 – April 14
Register by: January 9

6:30 – 9:30 p.m.

DR 605ED FIGURE DRAWING: THE DYNAMICS OF MOTION – NEW!

Michael Rossman

Room 461/Samuel M.V. Hamilton Building

Learning how to draw the posed human form is an essential challenge for every artist. However, drawing what the figure is doing, and how movement and behavior are expressed in graphic terms, is surprisingly within the reach of anyone through the study of basic drawing principles. Discover and build on your innate understanding of drawing and spatial concepts to develop your technical skills and inform your content. Study the methods for depicting motion through examples by drawing masters as you develop your personal calligraphy. Basic drawing experience required.

PT 708E ART AND FILM – NEW!

Clarissa Shanahan

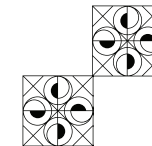
Room 465/Samuel M.V. Hamilton Building

This course examines the correlative relationship between the visual arts, and how the medium of film can be used to compose successful and impactful paintings. Painting and film are means of visual storytelling which rely on similar elements: composition, perspective, the expressive power of light and dark and symbolic color. The course will examine several films, including *M*, *The Wizard of Oz*, *A Clockwork Orange*, *Marie Antoinette*, *The Royal Tenenbaums*, *There Will Be Blood* and more. Use select still frames as a guide for in-class painting projects and learn to translate film's compositional and narrative elements into your own work.

**10 weeks, February 3 – April 7
(runs through Spring Break)**

**Tuition: \$395 non-credit or
\$525 for 1.0 undergraduate credit**

Register by: January 23



Michael Rossman



WEDNESDAY EVENINGS

January 21 – April 15
Register by: January 9

6:30 – 9:30 p.m.

PT 615E PAINTING FROM THE MASTERS – NEW AT NIGHT!

Jill A. Rupinski
Studio 4 and Galleries/
Historic Landmark Building



Whether you are a beginner or advanced student, painting from the work of a master is a timeless practice for the training of an artist, advancing your understanding of technique and enhancing personal development. Explore the rich technical elements of master works in this hands-on painting class, including research of pigment and paint, color systems and compositional foundations through direct observation and analysis of original paintings. The PAFA Museum will serve as the studio venue for this course with ample lecture and demonstration on the preparation of materials and painting technique.

Note: This class will meet 6 – 9 p.m.



PT 602E PORTRAIT PAINTING – NEW!

Theodore Xaras
Room 1021/Samuel M.V. Hamilton Building

This class covers all aspects of painting a traditional portrait. Topics include achieving a likeness, modeling light and shade, mixing skin tones and applying paint. Includes demonstrations, insights into the history of portraiture and tips on painting children's portraits. Valuable information for all levels. Drawing experience required.

PR 615SS SOLAR ETCHING – NEW! SHORT COURSE

Lesia Chittenden-Lim
6th Floor Print Shop/
Samuel M.V. Hamilton Building

Photopolymer etching is a versatile, simple and environmentally friendly way to make painterly prints without using chemicals or acid. The process involves transferring your drawings, paintings and/or computer generated images to a light sensitized plate which then can be developed with water and printed. The printed effects are equivalent to those of hard/soft ground etchings and aquatints as well as traditional lithograph and relief prints. A safe and direct way to make images!

5 weeks, March 4 – April 1
(runs through Spring Break)
Tuition: \$225 + \$25 materials fee
(includes basic materials)
Register by: February 20

THURSDAY EVENINGS

January 22 – April 16
Register by: January 9

6:30 – 9:30 p.m.

SC 711E FOUNDRY: AN INTRODUCTION

Pavel Efremoff
Room 781/Samuel M.V. Hamilton Building

This course will cover all aspects of the foundry process. Demonstrations and hands-on instruction will be given in wax modeling and casting, ceramic shell techniques, bronze pouring, metal chasing, TIG welding and patination. Lab fee of \$65. All levels.

A GIFT CERTIFICATE FOR A COURSE OR WORKSHOP MAKES A GREAT GIFT!

Call 215-972-7632 for more details.



PR 604EP MONOPRINT/ETCHING

Tony Rosati
6th Floor Print Shop/
Samuel M.V. Hamilton Building

Learn to create unique etchings called monoprints by incorporating painterly inking methods with basic intaglio techniques. Work in black-and-white and color using traditional intaglio techniques, including drypoint, etched line, open bite, aquatint, hard ground, simple collograph methods, and soft ground, producing both linear and tonal effects. Lab fee of \$20.



DR 600EB DRAWING FUNDAMENTALS

Phyllis Laver
Room 465/Samuel M.V. Hamilton Building

If you've never drawn before, or your skills are a little rusty, then this class is for you. Acquire grounding in the basics so you can draw what you see with confidence. Study the still life, cityscape, human figure, and other subjects to master the drawing elements – shape, contour line, composition, light and shadow, texture and perspective.




John Horn

WEEKDAY COURSES

SCHEDULE*

- 3 hours once a week for 12 weeks
- No Classes held during Spring Break, March 9 – 15*

 Denotes courses that meet Core Curriculum first-level requirements. See page 21.

TUITION*

- \$625 for 1.0 undergraduate credits
- \$495 for non-credit
- Additional lab and materials fees where indicated

*Unless otherwise indicated

MONDAYS

January 26 – April 20

Register by: January 9

PT 605MS LANDSCAPE AT MORRIS ARBORETUM SHORT COURSE

Jill A. Rupinski

Morris Arboretum

Enjoy painting the diversity found in this extraordinary 92-acre public garden. Picturesque subject matter includes foliage and flowers in a garden setting, tree specimens, and outdoor sculpture. Lessons in painting will be accompanied by demonstration and lecture. Includes a visit to the PAFA exhibition, *Artists in the Garden: American Impressionism and the Garden Movement, 1887 – 1920*.

5 weeks, April 13 – May 11

10 a.m. – 3 p.m.

Tuition: \$375

(includes admission to the Arboretum, free parking and use of the facilities)

Register by: April 3

Photo: Jill A. Rupinski



12:30 – 3:30 p.m.

PT 712EE PAINTING REALISTIC TEXTURES

Ernie Norcia

Room 1010/Samuel M.V. Hamilton Building

How do you make oil paint convey the quality of skin? Or the transparency of glass? What painting techniques will enable you to realistically depict fabric textures and folds that also reveal the structures underneath? In this class, learn methods of layering and glazing paint so you can master glass, metal, drapery, skin and more. Demonstrations and historically based lectures will support studio activities. Open to all levels, this course is an excellent option for those seeking to develop a greater sense of realism in their oil painting. Drawing experience recommended.

PT 723EC EXPANDING ARTISTIC HORIZONS: PAINTING AND COLLAGE – NEW!

SHORT COURSE

Richard Watson

Room 465/Samuel M.V. Hamilton Building

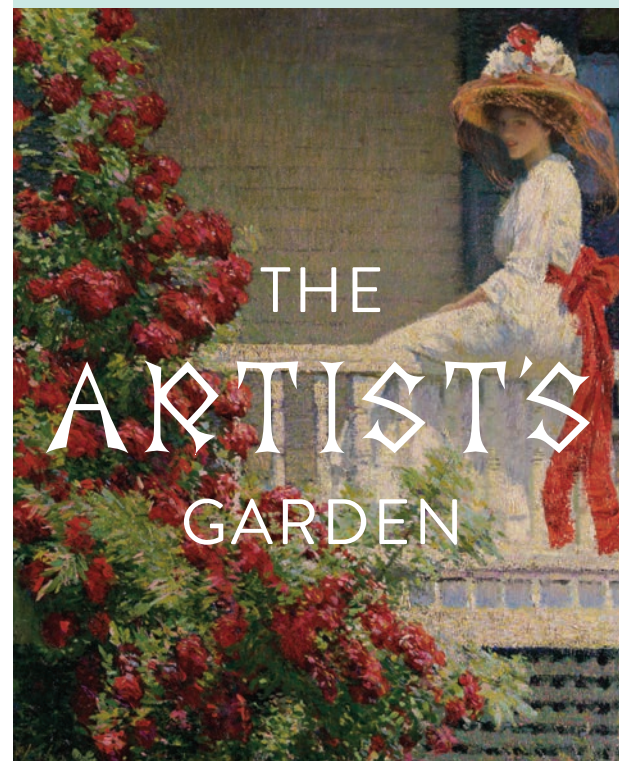
This course is designed to bring about breakthroughs in personal artistic expression through the use of painting and collage to create multi-media artworks influenced by issues, events and encounters experienced in daily life or past recollections. The choices of mediums, materials and subject matter are open to personal preferences, inviting experimentation and provoking new forms of expression. Designed to be an enjoyable experience with unlimited possibilities for all levels.

6 weeks, Mondays, March 16 – April 20

12:30 – 3:30 p.m.

Tuition: \$275

Register by: March 6



Philip Leslie Hale (1865-1931), *Crimson Rambler*, (detail) ca. 1908, Oil on canvas, 25 1/4 x 30 3/16 in., Pennsylvania Academy of the Fine Arts, Joseph E. Temple Fund, 1909.12

*The Artist's Garden:
American Impressionism and the
Garden Movement, 1887 – 1920*
February 13 – May 24, 2015

In celebration of this PAFA exhibition, look for related classes and workshops (boxed in green) which will include a visit to the exhibition.

*Artists in the Garden:
PAFA at Morris Arboretum*
Morris Arboretum Visitors Center
March 1 – June 27
Opening Reception:
Sunday, March 1, 1 – 3 p.m.

Be sure to visit this exhibition featuring artwork by students, alumni and faculty of the Pennsylvania Academy of the Fine Arts. Free admission to the Arboretum included for all PAFA students.

IN 751EE ARTZ IN THE STUDIO – NEW!

Dona Duncan

Room 461/Samuel M.V. Hamilton Building

This new program – jointly sponsored by PAFA and by ARTZ Philadelphia – has been designed for people living with memory loss. Students will experience the ways in which



art-making can become a creative form of self-expression, while enriching their lives through a new sense of community with others. Students will be free to express themselves through whatever drawing or painting means they choose in order to unlock their creativity, create new memories, strengthen relationships, and restore hope. Studio activities will be supplemented with ARTZ-facilitated conversations about works of

art in the PAFA museum. This course welcomes all levels of experience.

6 weeks, Mondays, April 6 – May 11
1 – 2:30 p.m.

Tuition: \$50 materials fee

For more information and to register, call 215-972-7632

ARTZ Philadelphia was created in July of 2013 as the first mid-Atlantic chapter of ARTZ/Artists for Alzheimer's. Founded in the Boston area in 2002, ARTZ strives to foster a sense of creative community among people living with dementia and their care partners; and to restore to people living with dementia their rightful place as valued members of our wider community.

SEE ALSO PAGE 19 FOR
ART AS THERAPY
WITH DONA DUNCAN



TUESDAYS

January 20 – April 14
Register by: January 9

9 a.m. – 12 p.m.

PT 600E LIFE PAINTING AND DRAWING

Douglas Martenson

Studio 6/Historic Landmark Building

Explore contemporary and traditional realism in drawing and oil painting. Learn fundamental elements of figure drawing including anatomy, quality of line, tone, composition, design, proportion and space. Students will work from models, starting with short poses and continuing to extended poses to develop finished paintings. The course includes drawing sessions at the School of Pennsylvania Ballet, where students will capture the fluidity and disciplined movement of dancers in motion, and student dancers posing at PAFA. Open to all levels.

12:30 – 3:30 p.m.

DR 603ED PASTEL DRAWING AND PAINTING

Joseph Sweeney

Room 610/Samuel M.V. Hamilton Building

Learn everything you need to know about soft pastels. Basic and advanced techniques will be covered while you work from still-life set-ups, figure models, and cityscape views. Lecture and demonstration will focus on technique, use of light and its effect on color, types of pastels available, use of different papers to create various effects, fixing and transporting finished drawings, and important safety issues.

DR 614EL DRAWING THE LIGHT – NEW! SHORT COURSE

Emily Brown

Room 465/Samuel M.V. Hamilton Building

Ambient, direct, diffuse, close-up, reflected, dim, strong, fluorescent, candle, flood, 60-watt and moon: specific light situations reveal the world to us in different ways. These differences influence the impact of a situation, and awareness of them is vital to those recording the world in art. Students will be drawing in the studio and later outside, considering various qualities of light that illuminate objects, people and places. Subjects will include figure models, interiors, still life objects and outdoor views. Homework will be assigned, including night studies of outdoor situations. Students will work monochromatically in graphite, charcoal, crayon and ink.

6 weeks, March 17 – April 21

12:30 – 3:30 p.m.

Tuition: \$275

Register by: March 6

WEDNESDAYS

January 21 – April 15
Register by: January 9

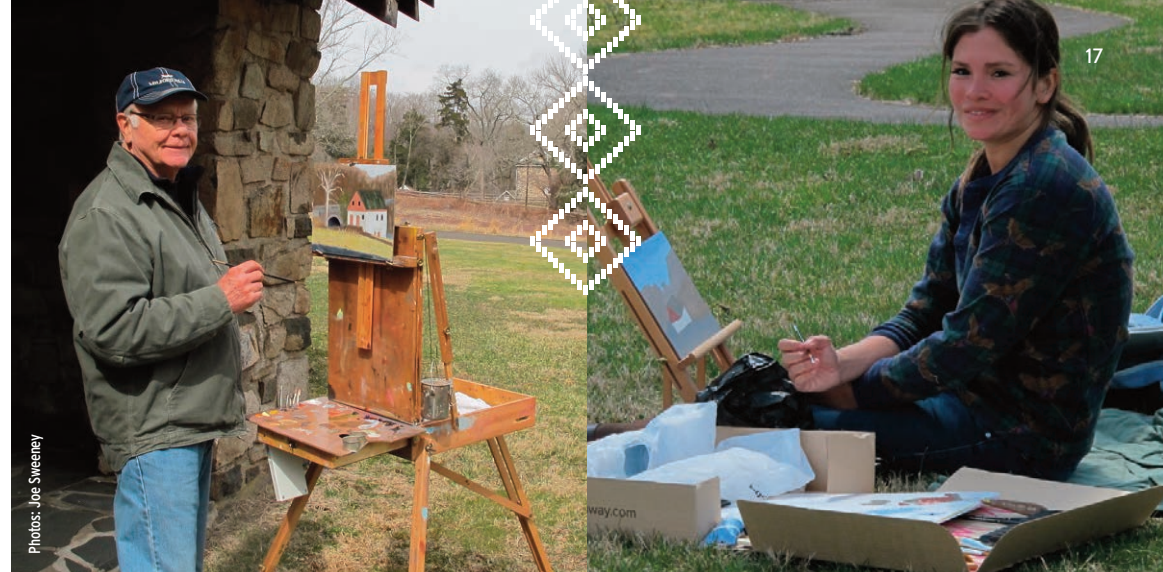
9 a.m. – 12 p.m.

DR 609E2 PORTRAIT AND FIGURE DRAWING – NEW!

Phyllis Laver

Room 465/Samuel M.V. Hamilton Building

This course is designed to further develop your portrait drawing skills, while questioning existing notions and definitions of portraiture. Work from costumed and life models with emphasis on composition, expression, rhythm and mark-making in a range of dry materials as well as ink to create richness and clarity. One-on-one and group critiques will be held throughout, as well as discussions of master drawings, past and present. Basic drawing experience recommended.



Photos: Joe Sweeney

12:30 – 3:30 p.m.

SC 605EA TERRA COTTA SCULPTURE

Colleen O'Donnell



Room 740/Samuel M.V. Hamilton Building

Explore the versatility of terra cotta clay sculpture which requires neither an armature nor casting. Learn various techniques and tools through demonstration and hands-on sculpting from the life model or imagination. Anatomy, proportion, design, and personal growth will be emphasized, as well as both representational and abstract approaches to subject matter. Sculptures will be fired at the end of the course. All levels. Lab fee of \$10.

PT 703EL PAINTING OVER THE LINE

Kassem Amoudi

Room 1023/Samuel M.V. Hamilton Building

Advance beyond confined lines and hard edges to a more liberated way of painting. Paint from observation and imagination to find your own visual language. Work more intuitively and view unforeseen occurrences as opportunities to discover new possibilities. Explore new processes in brushwork and color layering, as well as Post Impressionist, Abstract, and Abstract Expressionist styles. Examples from contemporary and modern art will broaden your understanding of innovative painting. Painting experience recommended.

PT 605EB THE PENNSYLVANIA LANDSCAPE TRADITION CONDENSED COURSE

Joseph Sweeney

New Hope, Solebury Township, PA

Master the essentials of landscape painting in the area made famous by the Pennsylvania Impressionists, including Daniel Garber's homestead. The New Hope countryside will inspire you with its views of the Delaware River, as it did Garber, Edward Redfield, Fern Coppedge, and other American Masters. Topics include effective color mixing to achieve a sense of light and air, capturing time of day, compositional fundamentals, and sound painting practices. All levels. Includes a visit to the PAFA exhibition, *The Artist's Garden: American Impressionism and the Garden Movement, 1887 – 1920*.
6 weeks, Wednesdays, April 8 – May 13
10 a.m. – 4 p.m.
Tuition: \$495 non-credit;
\$625 for 1.0 undergraduate credit
Register by: March 27



Photo: Allison Svendsen



THURSDAYS

January 22 – April 16
Register by: January 9

9 a.m. – 12 p.m.

PR 600EL WOODCUT AND RELIEF PRINTMAKING



Ronald Wyffels

6th Floor Print Shop/
Samuel M.V. Hamilton Building

Printing from a drawing carved into wood or a linoleum block is the oldest and most straightforward form of printmaking. Its beauty and expressive power can be seen in the work of Albrecht Dürer and the German Expressionists. All aspects of the process will be covered, including drawing on the block, carving your design and printing techniques for making black-and-white and color prints. Open to all levels, and an excellent introduction to printmaking for beginners. Lab fee of \$20.

DR 604E ANATOMICAL DRAWING:

John Horn

Studio 1/Historic Landmark Building

Understand human anatomy through lecture and drawing from the model. Topics include proportion, skeletal framework, superficial muscles, and the movement of the figure.



12:30 – 3:30 p.m.

DR 607EA CAST DRAWING



Neil di Sabato

Studios 2 & 3/Historic Landmark Building

Drawing in charcoal from casts is a traditional and effective way to learn to draw accurately from observation. Work from life-size copies of antique and Renaissance sculpture in PAFA's beautiful historic Cast Hall – a unique resource that has been part of PAFA's curriculum for over 200 years. This classical mode of instruction is ideal for beginning or advanced students interested in acquiring or sharpening their skills for representational drawing and painting.

IN 601E THE PAINTER'S CRAFT: MATERIALS & TECHNIQUES OF PAINTING SHORT COURSE

Anthony Ciambella

Room 461/Samuel M.V. Hamilton Building

Ralph Mayer's *The Artist's Handbook* has long been the painter's go-to reference for material and technical advice. Now you can experience this essential information firsthand, complete with demonstrations and on-location research, presented by Anthony Ciambella, practicing artist, private art conservator, and PAFA faculty member for over 25 years. Topics include:

- How to make informed choices when purchasing art supplies
- Stretching canvas and preparing wood panels
- Historic underpainting and glazing techniques, including the proper use of mediums, solvents, varnishes and brushes for oil, acrylic and egg tempera
- Framing your own paintings
- Visits to the PAFA Museum and the Philadelphia Museum of Art to view select artworks

Open to everyone, including painters of all media and levels and non-artists with an interest in how paintings are made.

6 weeks, Thursdays, March 19 – April 23

1 – 4 p.m.

Tuition: \$275

Register by: March 6



IN 750E ART AS THERAPY: FIND YOUR VOICE SHORT COURSE

Dona Duncan

Room 610/Samuel M.V. Hamilton Building

Art therapy can open up your mind and heart to a new world of enjoyment in life. It can unlock creative blocks and is used to treat PTSS, depression, self esteem issues and mid-life crises by improving communication skills and making us aware that art can be fun. Open to all levels, this is NOT a class to learn how to draw or be critiqued, but rather a supportive environment to express yourself with whatever means feels right. Tours of artworks in the PAFA museums will provide insight and understanding concerning the personalities and experiences of the artists. So, whether you have been painting forever or have never picked up a brush, join us and find your voice.

10 weeks, Thursdays, February 5 – April 9
(runs through Spring Break)

12:30 – 3:30 p.m.

Non-credit tuition: \$395

Register by: January 23

JOIN US AND FIND YOUR VOICE

Registered Art Therapist Dona Duncan creates a safe, comfortable environment with humor when appropriate and without pressure. She holds a degree in Art Therapy from Hahnemann Medical College with extensive study of psychology as well as art studies at PAFA. She has been on staff and started art therapy programs at hospitals in the Philadelphia area, and has worked with clients at New York University Hospital. Now a PAFA docent, she currently works privately with clients. Dona also works with residents living with memory loss at Cathedral Village, a continuing care retirement community, in a program sponsored by ARTZ Philadelphia.



FRIDAYS

January 23 – April 17
 Register by: January 9

9 a.m. – 12 p.m.

PR 620E SCREENPRINTING

Lisa Hamilton



6th Floor Print Shop/
 Samuel M.V. Hamilton Building

Screenprinting is a versatile and quick form of printing on paper, textiles, wood, glass, ceramics and more. All aspects of the process will be covered including screen preparation, image development, mixing and modifying ink, printing techniques and reclaiming screens. Students will have the opportunity to explore hand-drawn, digital and photo processes and will be encouraged to experiment. Open to all levels of experience. Lab fee of \$20.

PT 616EO BEGINNING OIL PAINTING

Jill A. Rupinski



Room 1010/Samuel M.V. Hamilton Building

A thorough introduction to the methods of and materials of oil painting. Learn to construct light, form and space while painting from direct observation. Explore a vibrant world of color relationships while learning to mix paint. Basic issues of drawing, composition, color and paint application will be addressed while working from interesting subject matter, including the still life and human figure. Learn to prepare painting surfaces, organize palettes, and how to use a variety of painting tools and mediums. Painting through history will be studied as it relates to class projects throughout the course.

PT 604ED IN-DEPTH WATERCOLOR CONDENSED COURSE

James Toogood

Room 610/Samuel M.V. Hamilton Building

This course is designed for students seeking to enrich their overall knowledge of painting with an in-depth look at watercolor. Topics will include a thorough investigation of watercolor materials and a wide range of techniques, with subjects ranging from landscape and still life to portrait and figure poses. Open to dedicated watercolorists of all levels, and to acrylic/oil painters looking to broaden their skills.

10 weeks, February 6 – April 17
 (no class on February 13)

9 a.m. – 1:30 p.m.

Tuition: \$595 non-credit;
 \$950 for 1.5 undergraduate credits

Register by: January 30

12:30 – 3:30 p.m.

DR 605EH DRAWING HANDS AND FEET SHORT COURSE

Neil di Sabato

Room 465/Samuel M.V. Hamilton Building

Novice and experienced artists alike struggle with the realistic rendering of hands and feet, elements that add credibility and expressiveness to figure and portrait drawings. Learn to translate these complicated forms from simple planar construction to complex, intricate drawings. Students will explore this subject through various materials and gain inspiration from master and contemporary drawings.

5 weeks, March 20 – April 17

12:30 – 3:30 p.m.

Tuition: \$225

Register by: March 13

STUDENT TESTIMONIALS



PAFA's Continuing Education program has reignited my passion for making art & sculptures. Courses in metal, stone, and terra cotta sculpture particularly have been rewarding with patient, skilled, and experienced artist-professors. Close one-on-one instruction in small classes has allowed the art pros to nurture the individual development of a diverse student body. Students' ages have ranged from 16 to over 80, with art training geared toward the novice to those with BFAs and MFAs. While the Philly area offers many community art centers, I believe PAFA provides an opportunity for a more intense learning and art making experience. I am deeply appreciative of PAFA and the Continuing Education program.

ROBERT JAFFE

Esquire, CE student since 2012

We're colleagues in highly left-brain professions; to provide balance and continuity in our lives we've taken wonderful PAFA classes (Portrait Drawing, Landscape Painting, Sculpture...and more!) for several years – although, separately. Finally, we're able to be in John Horn's excellent figure drawing class together. We enjoy encouraging and supporting each other; and, above all, having a friend nearby increases the FUN!

LILIANNE KIM

Biostatistician

LISA ARBUTINA

Clinical Planner

CE students since 2011 and 2008



CE CORE CURRICULUM PROGRAM



If you are new to art, taking classes but unsure of your direction, or returning to art after a long absence, the CE Core Curriculum Program is for you. Designed to help you achieve your artistic goals, the program provides a structured curriculum of classes in logical sequence to build your basic skills and the confidence necessary to move forward in any artistic direction.



Look for the icon next to courses that meet the first-level requirements.

Visit pafa.edu/CE for more information and call the Continuing Education office at 215-972-7632 to discuss what the Core Curriculum Program can do for you.

ROSEMARY SACK-INSLEE, CE student since 2011

WEEKEND COURSES

SCHEDULE*

- 3 hours once a week for 12 weeks
- No Classes held during Spring Break, March 9 – 15*



Denotes courses that meet Core Curriculum first-level requirements. *See page 21*

TUITION*

- \$625 for 1.0 undergraduate credits
- \$495 for non-credit
- Additional lab and materials fees where indicated

*Unless otherwise indicated

SATURDAYS

January 24 – April 18

Register by: January 9

9 a.m. – 12 p.m.

PT 616C2 BEGINNING PAINTING II

SHORT COURSE

Allison Syvertsen

Room 465/Samuel M.V. Hamilton Building

Build upon your basic oil painting skills to develop more complex compositions and personal style. Work from a variety of subject matter, including still life and interior/exterior views, to improve both your technical ability and your understanding of visual concepts. Topics will include color mixing and relationships, as well as painting surface preparations and presentation. This course is ideal for students with limited painting experience or those seeking to fill in gaps in their understanding of essential concepts.

10 weeks, January 31 – April 4

(runs through Spring Break)

9 a.m. – 12 p.m.

Tuition: \$395 non-credit or

\$525 for 1.0 undergraduate

Register by: January 23

SC 602E STONE CARVING

Steve Nocella

Room 760/Samuel M.V. Hamilton Building

Explore the possibilities of stone carving by using traditional and nontraditional methods. All processes from rough carving to polishing will be covered, and various tools and techniques will be demonstrated. Lab fee of \$25.

DR 605E2 LIFE DRAWING II

John Horn

Room 1021/Samuel M.V. Hamilton Building

Lectures and drawing demonstrations on proportions, skeletal framework, surface form, and movement of the figure will help you develop the ability to draw the human form with anatomical and spatial accuracy. Designed to advance the skills of students who have studied drawing previously.

PR 602EC LITHOGRAPHY

CONDENSED COURSE

Ronald Wyffels

Print Shop/Samuel M.V. Hamilton Building

Lithography is the printmaking technique most capable of capturing the great range and subtlety of direct drawing. Design your own images as you experiment with a variety of lithographic drawing materials and learn black-and-white and color printing techniques.

8 weeks, January 31 – March 28

(no class on March 14)

9 a.m. – 1:30 p.m.

Tuition: \$625 for 1.0 credit or

\$495 non-credit + \$20 lab fee

Register by: January 23

12:30 – 3:30 p.m.

SC 600E FIGURE AND PORTRAIT MODELING

John Horn

Room 740/Samuel M.V. Hamilton Building

This sculpture course introduces the conceptual and practical aspects of modeling the figure in clay on an armature from direct observation. Experienced students will model a 24-inch figure based on volume, proportion, architectonic construction, and spatial displacement of form. Beginning students will sculpt a life-size portrait first. Technical procedures discussed will include armature construction, orientation of the armature to the model, clay-modeling (methodology), the specific use of tools, and basic elements of plaster casting. All levels. Lab fee of \$10.

SDR 603ED RENAISSANCE DRAWING TECHNIQUES

Robert Waddington

Cast Hall & Studio 4/

Historic Landmark Building

The invention of perspective and the introduction of paper in Europe in the 13th century ushered in the heights of Renaissance drawing. Draw from PAFA's renowned cast collection and from the costumed model, and learn classical drawing techniques specifically developed to describe three-dimensional form. Work in charcoal, conté crayon and chinks, as well as pen-and-ink wash on toned paper. Schematic and perspective drawings, including compositional drawings for fresco, panel and canvas painting, will also be discussed. All levels welcome.



SC 601E SCULPTURE: ALL MEDIA – NEW!

Steve Nocella

Room 760/Samuel M.V. Hamilton Building

Explore sculpture from an individualized point of departure. Students will design a project with the guidance of the instructor based on their personal ideas and expression. Medium will be chosen based on those ideas and instruction will be focused accordingly. Mediums include, but are not limited to, clay, steel and other metals, stone, wood, plaster, cement, concrete, and mixed media. Lab fee of \$25.

SC 707PP PUPPET-MAKING

AND PAGEANTRY

SHORT COURSE

Elizabeth Hill

Room 610/Samuel M.V. Hamilton Building

Have fun in this dynamic overview of the ancient, community-based art of large-scale puppet-making. Each student will build a basic large-scale backpack-type puppet with moving parts, designed to be worn and operated while on procession in a parade. Suited to students of all levels of experience.

6 weeks, March 14 – April 18

Tuition: \$275 + \$25 materials fee

(includes most materials)

Register by: March 6



SUNDAYS

PT 600E FIGURE PAINTING
CONDENSED COURSE

Frederic Kaplan

Room 1021/Samuel M.V. Hamilton Building

Paint in oil from the life model and make full figure, head and torso studies. Anatomy, composition, proportion, light and shadow, color, painting technique and history will be addressed. Basic drawing experience recommended.

6 weeks, March 15 – April 26

(no class on Easter Sunday, April 5)

9:30 a.m. – 4 p.m.

Tuition: \$495 non-credit or

\$625 for 1.0 undergraduate credit

Register by: March 6

IN 615BB BOOKMAKING WORKSHOP
SHORT COURSE

Robert Waddington

Room 610/Samuel M.V. Hamilton Building

A handmade book is a work of art that can be used as journal, sketchbook, photo album or scrapbook – not to mention a great gift. Learn basic and advanced binding methods, page layout and construction, decoration and final assembly. Come away with one-of-a-kind soft and hardcover books!

6 weeks, March 15 – April 26

(no class on Easter Sunday, April 5)

10 a.m. – 2 p.m.

Tuition: \$295 + \$25 materials fee

(includes most materials)

Register by: March 6

PT 605BG PLEIN AIR PAINTING
AT BARTRAM'S GARDEN
SHORT COURSE

Larry Francis

Bartram's Garden,

54th Street & Lindbergh Boulevard

bartramsgarden.org

This class will be held at historic Bartram's Garden, home of America's first botanist, John Bartram. Work *en plein air* in the medium of your choice to capture light and shadow, and to create a convincing sense of space and forms, including a variety of trees, flowers and buildings. Drawing and painting techniques will be demonstrated for oil and gouache. Van transportation is available from PAFA and there is plenty of free parking and restrooms available on site.

5 weeks, Sundays, April 19 – May 17

12:30 – 3:30 p.m.

Tuition: \$250

Register by: April 10

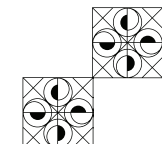


I knew the one thing I always wanted to do was to become an artist, but life led me in other directions. At retirement I decided I would finally give art a try. I went to PAFA in 2007 and started taking CE courses. The classes are excellent with instructors that teach and encourage the students. Every semester I look for the catalogue to arrive to see what I can learn next. Taking that first course was one of the best decisions of my life. Thanks to PAFA's Continuing Education Program, I'm finally doing what I've always wanted to do... create art!

WAYNE FRANKS

Elementary School Teacher,

CE student since 2007

WORKSHOPS, LECTURES
AND SEMINARS

FRAMING AND MATTING WORKSHOPS

The way you frame and mat makes all the difference in how your artwork is seen. Learn to frame your own drawing and paintings, and keep creative control not to mention save money! A great opportunity to prepare your artwork for submission to the *Continuing Education Programs Annual Juried Student Exhibition*.

IN 605EM MATTING AND FRAMING
WORKS ON PAPER

James Toogood

Room 610/Samuel M.V. Hamilton Building

View a complete demonstration of all the procedures required to properly prepare your work for framing, from cutting and hinging mats, to fitting and final assembly including glazing, and then work on your own project under the supervision of the instructor.

Saturday, January 31

(Snow date: February 7)

9 a.m. – 5 p.m.

Tuition: \$115

Register by: January 16

IN 605EC FRAMING PAINTINGS
ON CANVAS AND PANEL

Roger Chavez

9th Floor Frame Shop/
Samuel M.V. Hamilton Building

Learn step-by-step methods of constructing wooden frames for paintings on canvas and panel, including the safe and easy use of the miter saw to cut wood to size and the router to create simple or elaborate profiles, as well as frame assembly, artwork mounting, and the selection of a frame color and finish to best enhance your work. Students are encouraged to bring an artwork to frame.

Sunday, February 8

(Snow date: February 15)

9 a.m. – 5 p.m.

Tuition: \$150 (includes all materials)

Register by: January 30

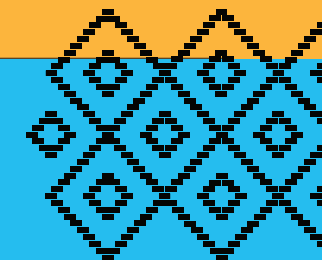
CONTINUING EDUCATION PROGRAMS
ANNUAL JURIED STUDENT EXHIBITION

March 6 – April 12

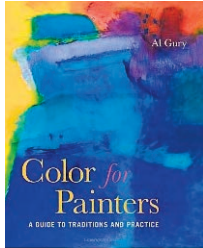


Be sure to submit your artwork!

Students enrolled in CE classes during the Spring 2014 through Spring 2015 semesters are eligible to enter. Watch for a detailed prospectus available on our website in January: pafa.edu/CE.



FEBRUARY



Al Gury, *Color for Painters: A Guide to Traditions and Practice*, New York: Watson-Guptill, 2010

PT 602AG PORTRAIT PAINTING WORKSHOP WITH AL GURY

Room 1023/Samuel M.V. Hamilton Building

Learn all aspects of painting a traditional portrait from Al Gury, Chair of the PAFA Painting Department and author of *Alla Prima: A Contemporary Guide to Direct Painting*, and *Color for Painters: A Guide to Traditions and Practice*. Topics include achieving a likeness, modeling light and shade, mixing skin tones and applying paint through various techniques. All participants will produce at least one finished portrait. Includes demonstrations and discussions of the history of portraiture. For all levels of experience.

Saturday and Sunday, February 14 & 15
(*Snow dates: February 21 & 22*)

9 a.m. – 5 p.m.

Tuition: \$295

Register by: February 6



PT 630EG GOUACHE PAINTING – NEW!

Larry Francis

Room 610/Samuel M.V. Hamilton Building

Gouache, or opaque watercolor, has a beautiful and unique look somewhere between oil and watercolor. Great masters including Winslow Homer, Turner, and Thomas Moran all used the medium. In this workshop, learn how to get started with this very portable and quick-drying medium. Work on toned paper from the still life and cityscape, and create compositions with an eye to light and color.

Saturday and Sunday, February 21 & 22

(*Snow dates: February 28 & March 1*)

9 a.m. – 5 p.m.

Tuition: \$205

Register by: February 13

IN 621ET FROM STUDIO TO GALLERY: THE BUSINESS OF ART

Joseph Sweeney

Room 420/Samuel M.V. Hamilton Building

How can you make it in today's art world? Accomplished landscape painter and art-market veteran Joe Sweeney shows you how to position yourself as a highly enterprising artist. Topics include marketing and social media, grant writing, acquiring gallery representation, adjunct teaching at colleges and art centers, frames and presentation, contracts, commissions and copywriting. Receive assistance in portfolio preparation, writing your resume and artist statement, and digitally photographing artwork.

Saturday and Sunday, February 28 & March 1
(*Snow dates: March 7 & 8*)

10 a.m. – 4 p.m.

Tuition: \$175

Register by: February 20

MARCH

PT 604WW WATERCOLOR WORKSHOP

James Toogood

Room 610/Samuel M.V. Hamilton Building

Designed for those who wish to acquire or improve their basic skills in watercolor painting. A variety of materials and techniques will be discussed, including the selection of papers, brushes, and pigments, as well as transparent and opaque painting methods. Students will work from still-life, portrait models or their own source material. All levels welcome.

Saturday and Sunday, March 7 & 8

(*Snow dates: March 14 & 15*)

9 a.m. – 5 p.m.

Tuition: \$205

Register by: February 27

PT 616WW BEGINNING PAINTING WORKSHOP – NEW!

Aubrey Levinthal

Room 1010/Samuel M.V. Hamilton Building

This workshop is designed to show those new to painting how to make colorful still life in a concentrated amount of time. Focus will be on the application of the paint, color relationships and understanding the abstract structure of the picture. Students will come away with multiple paintings and exercises to employ to continue growth in these areas, after the workshop. Includes a visit to *A Fine Arrangement: The Art of Still Life*, on view in the PAFA School of Fine Arts Gallery, which includes paintings by the instructor.

Saturday and Sunday, March 14 & 15
(*Snow dates: March 21 & 22*)

9 a.m. – 5 p.m.

Tuition: \$205

Register by: March 6

IN 747BG CRITIQUE WITH JAN BALTZELL AND MICHAEL GALLAGHER

Room 463/Samuel M.V. Hamilton Building

If you've been feeling isolated in your studio, or have been taking classes and are unsure of your direction, then a critique may be just what you need. Stimulate your art-making with helpful feedback from accomplished artists and PAFA faculty members Michael Gallagher and Jan Baltzell, in the company of your peers. The atmosphere is always supportive, never judgmental or confrontational.

Space is limited.

Saturday, March 21

(*Snow date: March 28*)

Start time, 9 a.m.

Tuition: \$50

Register by: March 13

DR 615EP BOTANICAL ALLA PRIMA – NEW!

Linda Gist

Room 611/Samuel M.V. Hamilton Building

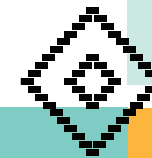
Spring is here! Develop the skills to capture the essence of a living subject quickly and spontaneously in pencil and watercolor, to produce work that is fresh and immediate. This method can be used for preparatory studies for sustained paintings, compiling a field sketchbook or as an end in itself. Includes a visit to the PAFA exhibition, *The Artist's Garden: American Impressionism and the Garden Movement, 1887 – 1920*. All skill levels welcome.

Saturday & Sunday, March 21 & 22

9 a.m. – 5 p.m.

Tuition: \$205

Register by: March 13



WOODCUT WORKSHOP WITH DAN MILLER

February 28 & March 1. *See page 4.*

MASTER CLASS WITH DANIEL GREENE

March 26-29. *See page 5.*



APRIL

IN 610MC MIXED MEDIA COLLAGE

Anthony Ciambella

Room 461/Samuel M.V. Hamilton Building

Newspaper and magazine cut-outs, fabric swatches, and photographs are just a few of the materials artists use to “glue down” and make art. Explore the various adhesives and tools designed for artists as well as some of the more popular non-artist commercial products available. Composition, color, texture, and content will be discussed. Personal vision and development will be encouraged.

Open to all levels.

Saturday, April 4

9 a.m. – 5 p.m.

Tuition: \$125 (includes basic materials)

Register by: March 27

IN 716E VISIT THE VAULTS WITH BILL SCOTT AND CINDI ETTINGER

The PAFA Museum’s permanent collection houses over 2,000 paintings, 450 sculptures and 11,000 works on paper that have been rarely exhibited. Join Master Printer Cindi R. Ettinger and painter/printmaker Bill Scott in PAFA’s new Richard C. von Hess Foundation Works on Paper Gallery for an informal discussion which will describe the printing process while focusing on selected etchings and other intaglio prints from PAFA’s vast permanent collection. Ettinger and Scott will discuss works from the mid-19th century to the present including works by Daniel Garber, Arthur Carles, Milton Avery, Neil Welliver, Sue Coe, Sarah McEaney, and others. Ettinger will also share technical insight into the prints she has made in her numerous collaborations with contemporary artists. Space is limited to 10 participants.

Friday, April 10

2 – 4 p.m.

Tuition: \$75



PT 625EE STILL LIFE: COMPOSITION & EXPRESSION

Michael Gallagher

Room 1010/Samuel M.V. Hamilton Building

Learn to better translate our observable three-dimensional world into dynamic and expressive drawings and paintings. Use the still life motif to investigate the importance of composition, tonal value, color relationships, narrative and personal expression. Art historical references will emphasize the importance of design and the rich tradition of the genre. Students may draw or paint or do both. Includes a visit to *A Fine Arrangement: The Art of Still Life*, on view in the PAFA School of Fine Arts Gallery, co-curated by the instructor. Basic drawing and/or painting experience recommended.

Saturday and Sunday, April 11 & 12

9 a.m. – 5 p.m.

Tuition: \$205

Register by: April 3

DR 639EP PENTIMENTO: DRAWING AND PAINTING BY SUBTRACTION – NEW!

Charles Muldowney

Room 461/Samuel M.V. Hamilton Building

Dynamic images can be created through the use of pentimento, a process of drawing and painting by removing material or attenuating layers of medium. Dark field drawing, glazing, velatura, monoprinting, sanding, scratching, dry brush, scumbling, and reviving obliterated drawings and paintings will be demonstrated. Students will work on conté and charcoal drawings, as well as monoprints, and will have the option to practice the various painting techniques on their old work brought to class. Includes a visit to the PAFA Museum to discuss these techniques in masterworks.

Saturday, April 18

9 a.m. – 5 p.m.

Tuition: \$115

Register by: April 10

SC 605EW TERRA COTTA FIGURE SCULPTURE

Colleen O’Donnell

Studio 5/Historic Landmark Building

Explore the versatility of terra cotta clay, which requires neither an armature nor casting. Learn various techniques and tools through demonstration and hands-on sculpting from the life model. Sculptures will be fired at the end of the workshop.

Saturday and Sunday, April 18 & 19

9 a.m. – 5 p.m.

Tuition: \$205 + \$10 lab fee

Register by: April 10

PT 705EW SPONTANEOUS ABSTRACTION – NEW!

Kassem Amoudi

Room 465/Samuel M.V. Hamilton Building

Many artists can feel frustrated in front of a blank canvas, unsure of how to start and what to paint. This workshop will focus on different techniques that will enable you to start painting with confidence by tapping into your intuitive process and finding inspiration more easily. Demonstration and critique will enhance your knowledge of the process of painting.

Saturday and Sunday, April 25 & 26

9 a.m. – 5 p.m.

Tuition: \$205

Register by: April 17

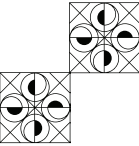
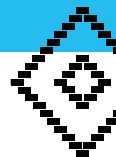


CONTINUING EDUCATION OPEN HOUSE

April 11. *See page 3.*

MASTER CLASS WITH STUART SHILS: VOYAGES THROUGH PERCEPTUAL HISTORY

April 17 – 19. *See page 6.*



APRIL

DR 630EC CHILDREN'S BOOK ILLUSTRATION – NEW!

Ryan Muldowney

Room 611/Samuel M.V. Hamilton Building

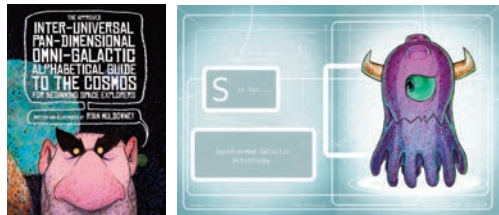
This workshop is focused on developing imagery that effectively contributes to the storytelling of a children's book manuscript. Topics covered include character design, collecting and utilizing to reference material, designing compositional elements, page layout, and responding to a text. In addition, strategies on marketing a children's book portfolio and self-publication will be discussed. Illustration techniques will be demonstrated, such as pen-and-ink, watercolors, color pencil, pastels, acrylic, mixed media, collage and oils.

2 Saturdays, April 25 & May 2

9 a.m. – 5 p.m.

Tuition: \$205

Register by: April 17



Ryan Muldowney, *The Approved Inter-Universal, Pan-Dimensional, Omni-Galactic, Alpha Guide to the Cosmos for Beginning Space Explorers*. Illustrated by the author. Brazen Fleece Press, 2014.

MAY

PR 604EH HAND-PRINTED MONOTYPE

Shushana Rucker

Room 610/Samuel M.V. Hamilton Building

This workshop will introduce students to quick and easy monotype printmaking methods that do not require a press or fully equipped shop. These techniques are easily transportable for use outside for plein air work, or at home on a desk or kitchen table. Techniques covered will include: oil based, dark field, water based and Gauguin monotype.

Saturday, May 2

9 a.m. – 5 p.m.

Tuition: \$150 (includes basic materials)

Register by: April 24

DR 620EW SKETCH ON THE GO

Frederic Kaplan

Center City Locations

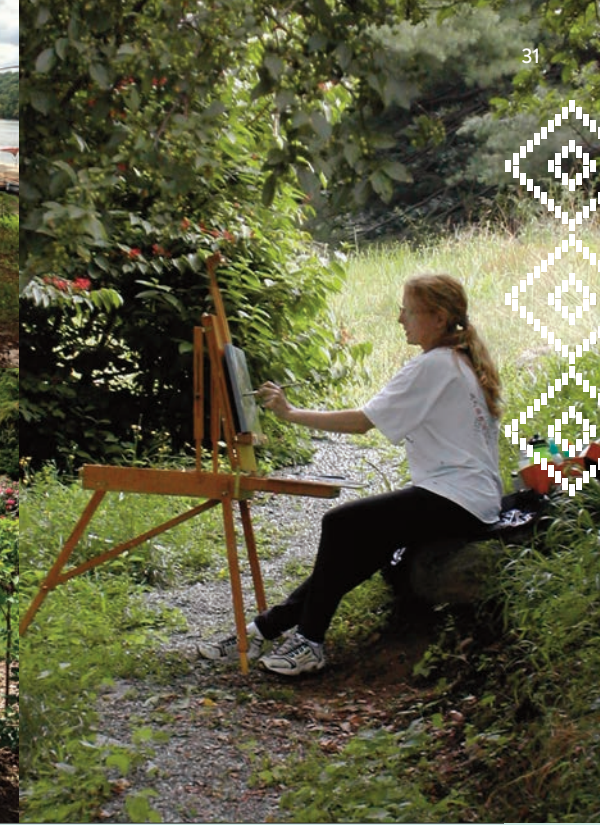
Capture the active life of the city and its rich architecture. This is an excellent workshop for anyone who wants to learn to sketch on the bus or train, in cafés and public parks or while traveling abroad. Topics discussed and demonstrated include perspective, gauging proportions by eye, gesture figure drawing, and methods for simplifying shape and form. Use your favorite drawing media: pencil, ink, crayon, or watercolor. All levels welcome.

Saturday, May 9

9 a.m. – 5 p.m.

Tuition: \$115

Register by: May 1



IN 701EG THE VIOLETTE DE MAZIA FOUNDATION AT PAFA: THE ARTIST'S GARDEN

Christine Stoughton



Painters have long drawn inspiration from their natural environment. In the gardener's hands nature itself is the raw material for expression. Yet, the painter and gardener both construct an illusion of nature through deliberate selection and arrangement. Join us for an examination of both the painter and gardener's garden, including an exploration of the PAFA exhibition *The Artist's Garden: American Impressionism and the Garden Movement, 1887-1920* as well as a visit to Chanticleer Gardens.

3 Saturdays, 10 a.m. – 12 p.m.

May 2 & 9: PAFA

May 16: Chanticleer Gardens

Tuition: \$125

Register by: April 24

PT 605EB PAINTING ON THE BRANDYWINE

Frederic Kaplan

Chadds Ford, Pennsylvania

Enjoy the day while working in drawing/painting medium of your choice along the banks of the picturesque Brandywine River, and capture the effects of light, time of day, reflections and shadows. You may choose to have lunch at Hank's, a longtime haunt of Andrew Wyeth's. After lunch, the class will visit the Brandywine River Museum to view the land- and seascapes of William Trost Richards, Jasper Cropsey and Asher B. Durand and others.

Saturday, May 16

9 a.m. – 5 p.m.

Tuition: \$125

Register by: May 8



STILL LIFE PAINTING WITH CHRISTINE LAFUENTE

May 2 & 3. *See page 6*



AN ARTIST'S RETREAT WITH ANNA RHODES

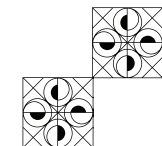
May 15 – 18. *See page 6*



PLEIN AIR PAINTING IN BERMUDA WITH JOE SWEENEY

May 18 – 22. *See page 4*

SCHEDULE-AT-A-GLANCE



MONDAY

January 26 – April 20

TUESDAY

January 20 – April 14

WEDNESDAY

January 21 – April 15

THURSDAY

January 22 – April 16

FRIDAY

January 23 – April 17

SATURDAY

January 24 – April 18

SUNDAY

January 25 – April 19

9 a.m. – 12 p.m.

Landscape at Morris Arboretum
Rupinski
5 weeks, 4/13 – 5/11
10 a.m. – 3 p.m.

Life Painting and Drawing
Martenson
Studio 6/HLB

Portrait & Figure Drawing
Laver
465/Hamilton

Woodcut and Relief Printmaking
Wyffels
660/Hamilton

Anatomical Drawing
Horn
Studio 1/HLB

Screenprinting
Hamilton
660/Hamilton

Beginning Oil Painting
Rupinski
1010/Hamilton

In-Depth Watercolor
Toogood
10-weeks, 2/6 – 4/17
9 a.m. – 1:30 p.m.
610/Hamilton

Stone Carving
Nocella, 760/Hamilton

Life Drawing II
Horn, 1021/Hamilton

Beginning Painting II
Syvertsen
10 weeks, 1/31 – 4/4
465/Hamilton

Lithography
Wyffels
8 weeks, 1/31 – 3/28
9 a.m. – 1:30 p.m.
660/Hamilton

Figure Painting
Kaplan
6 weeks, 3/15 – 4/26
9:30 a.m. – 4 p.m.
1021/Hamilton

Bookmaking Workshop
Waddington
6 weeks, 3/15 – 4/26
10 a.m. – 2 p.m.
610/Hamilton

12:30 – 3:30 p.m.

Painting Realistic Textures
Norcia
1010/Hamilton

Expanding Artistic Horizons: Painting & Collage
Watson
6 weeks, 3/16 – 4/20
465/Hamilton

ARTZ in the Studio
Duncan
6 weeks, 4/6 – 5/11
1 – 2:30 p.m.
461/Hamilton

Pastel Drawing & Painting
Sweeney
610/Hamilton

Drawing the Light
Brown
6 weeks, 3/17 – 4/21
465/Hamilton

Painting Over the Line
Amoudi
1023/Hamilton

Terra Cotta Sculpture
O'Donnell
740/Hamilton

The Pennsylvania Landscape Tradition
Sweeney
6 weeks, 4/8 – 5/13
10 a.m. – 4 p.m.
New Hope

Cast Drawing
di Sabato
Cast Hall/HLB

Art as Therapy
Duncan
10 weeks, 2/5 – 4/9
610/Hamilton

The Painter's Craft: Materials and Techniques of Painting
Ciambella
6 weeks, 3/19 – 4/23
1 – 4 p.m.
461/Hamilton

Drawing Hands & Feet
di Sabato
5 weeks, 3/20 – 4/17
465/Hamilton

Figure and Portrait Modeling
Horn
740/Hamilton

Renaissance Drawing Techniques
Waddington
Cast Hall & Studio 4/HLB

Sculpture: All Media
Nocella
760/Hamilton

Puppet-Making & Pageantry
Hill
6 weeks, 3/14 – 4/18
610/Hamilton

Plein Art Painting at Bartram's Garden
Francis
5 weeks, 4/19 – 5/17
12:30 – 3:30 p.m.

6:30 – 9:30 p.m.

The Figure as a Point of Departure
O'Donnell
740/Hamilton

Pencil Drawing with Watercolor & Ink
Sakaguchi
10 weeks, 2/2 – 4/13
610/Hamilton

Oil Painting and Glazing
Lewis, 1010/Hamilton
6 weeks, 3/16 – 4/20

Figure Drawing: The Dynamics of Motion
Rossmann
461/Hamilton

Art and Film
Shanahan
465/Hamilton
10 weeks, 2/3 – 4/14

Painting from the Masters
Rupinski
6 – 9 p.m.
Studio 4 & PAFA Museum/HLB

Portrait Painting
Xaras
1021/Hamilton

Solar Etching
Chittenden-Lim
5 weeks, 3/4 – 4/1
660/Hamilton

Monoprint/Etching
Rosati
660/Hamilton

Foundry
Efremoff
781/Hamilton

Drawing Fundamentals
Laver
465/Hamilton

PRE-COLLEGE SATURDAY CLASSES

Drawing and Painting for High School Students
Chavez
10 weeks, 1/31 – 4/4
10 a.m. – 1 p.m.
1023/Hamilton

See page 4 for Master Classes

See page 25 for Workshops, Lectures and Seminars

Courses are 12-weeks unless otherwise indicated.

No 12-week classes during Spring Break, March 9 – 15
No classes on Easter Sunday, April 5



Spring 2015

REGISTRATION INFORMATION

4 WAYS TO REGISTER!

REGISTRATION BEGINS DECEMBER 8

Register early to guarantee enrollment and prevent course cancellations.

1. **ONLINE:** www.pafa.edu/ce
2. **PHONE:** 215-972-7632
3. **MAIL*:** Continuing Education Programs
Pennsylvania Academy
of the Fine Arts
128 North Broad Street
Philadelphia, PA 19102
4. **IN PERSON:** Visit the Continuing Education office on the 3rd Floor of the Samuel M.V. Hamilton Building

**Please mail a completed registration form with check, money order, or credit card information. We accept VISA, MasterCard, American Express and Discover Card. Make checks or money orders payable to "PAFA."*

STUDENT ADVISING

We are here to help! For assistance in course selection or to make an appointment, call 215-972-7632 or email continuinged@pafa.edu.

Continuing Education Programs Office Hours

Monday – Thursday9 a.m. – 7 p.m.
Friday9 a.m. – 4 p.m.
Saturday8:30 a.m. – 1:30 p.m.
During school vacations and when evening/weekend classes are not in session, the office will be open Monday through Thursday, 9 a.m. – 5 p.m., and 9 a.m. – 4 p.m. on Friday. Visit pafa.edu/CE for updated hours after January 20, 2015.

CREDIT

PAFA is accredited through the National Association of Schools of Art and Design (NASAD) and the Middle States Commission on Higher Education (MSCHE). PAFA is a member of the Association of Independent Colleges of Art and Design (AICAD).

Undergraduate Credit

Most courses are available for 1.0 undergraduate credit (unless otherwise indicated). If taken for credit, you may incur additional coursework, and will receive a course grade and appropriate credit that will appear on an official PAFA transcript, if requested. To request an official transcript, visit www.pafa.edu/transcript to download a transcript request form.

Changes in credit status must be arranged through the CE office prior to the third class. No refunds for changes from credit to non-credit.

FOR PENNSYLVANIA AND NEW JERSEY K-12 EDUCATORS

PAFA is approved to offer Pennsylvania Act 48 hours and New Jersey Department of Education Professional Development Credit for all of its courses and workshops as follows: 1.0 undergraduate credit CE courses are available for 30 or 36 Act 48 hours or NJ credits according to each course's accumulative contact hours. Workshops, lectures and seminars are eligible for the number of hours for which they meet (excluding lunch breaks).

Educators electing to receive PA Act 48 or NJ Professional Development Credit should notify the Continuing Education Programs office when registering.

REGISTRATION DEADLINES

- January 9 for courses beginning January 20 - 26
- January 23 for Saturday Pre-College Classes for High School Students
- Registration deadlines vary for Short and Condensed Courses, Workshops, Lectures and Seminars and Master Classes. Please refer to individual course descriptions.

COURSE TUITION AND FEES

- For 12-week, 1.0 credit courses: \$625 for credit or \$495 non-credit
- Tuition varies for Short and Condensed Courses, Workshops, Lectures, Seminars and Master Classes. Please refer to individual course descriptions.

Lab and Material Fees

Please consult individual course descriptions for any applicable lab or materials fees.

Late Fee

Registrations received after 5 p.m. on their deadline date will be assessed a late fee of \$25.

Locker Rental

Lockers are available on a first-come, first-served basis for \$25.

DISCOUNTS*

Referral Discount

Refer a first-time Continuing Education student, and receive a 10% tuition discount on one (1) course or workshop within the current semester (*excluding Master Classes*).

Membership Discount

PAFA Members at the Friend level and above receive a 10% tuition discount on all CE courses, workshops and Master Classes.

*Lab, materials and locker fees are not eligible for discount. Some restrictions apply. Call 215-972-7632 for more information.

SCHOLARSHIPS

CE Community Scholarship

PAFA Continuing Education is pleased to present the "CE Community Scholarship" to assist students who demonstrate dedication to their art. Requirements:

- Completed application form
- Completed CE registration form
- Portfolio of 5 – 10 pieces
(*may be digital images in JPEG format on a CD*)
- Personal statement (*one page*)
- Letter of support from a teacher or comparable
- A copy of your most recent tax return (or other proof of income)

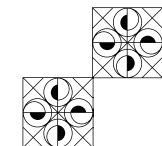
Application deadline: **Monday, January 5**

Partial tuition scholarships will be awarded on a competitive basis on the basis of need and merit. Application will be available to download from pafa.edu/ce by December 8. Please call 215-972-7632 for more information.

The CE Community Scholarship is made possible in part by a generous contribution from the Dry Family Foundation. For information about making a gift to support the CE Community Scholarship, please contact the Development Department at 215-972-2077.

High School Student Scholarship

Visit pafa.edu/HighSchool for more information and to download an application. Application Deadline: **Friday, January 16**



A GIFT CERTIFICATE FOR A COURSE OR WORKSHOP MAKES A GREAT GIFT!

Call 215-972-7632 for more details.



REFUND POLICY

Withdrawals must be made in writing via letter or email to the Continuing Education Programs office. A \$30 administrative fee will be assessed per dropped course or Master Class and \$15 per workshop. Tuition refunds will be adjusted according to the following schedule (less the administrative fee), unless otherwise indicated.

12-week Courses

- Prior to one week before the 1st class100%
- After the above, prior to the 2nd class 75%
- After the above, prior to 3rd class 50%
- After the above0%

Condensed/Short Courses

- Prior to one week before the 1st class100%
- After the above, prior to the 2nd class50%
- After the above.....0%

Workshops, Lectures and Seminars

- Prior to one week before the 1st day100%
- After the above, prior to the 1st day50%
- After the above0%

Master Classes and Workshops

No refunds after registration deadlines (see course descriptions)

COURSE CANCELLATIONS

If minimum enrollment is not met, a class will be cancelled on or shortly after its registration deadline date. Students will be notified by phone and may choose to transfer into another class or receive a full tuition and fee refund. Please register early to help prevent course cancellation. Travel insurance is recommended for those attending from a distance.

WEATHER/EMERGENCY CLOSING

The closing, delayed opening, or early dismissal of PAFA will be determined jointly by the Dean of the School and the Museum Director, with approval of the President. Such closing or delay would include the School, galleries and administrative offices. Decisions regarding the cancellation of special events and evening classes may be made later in the day. To find out if PAFA is closed or delayed you should check one of the following:

- Our website – messages will be updated on the PAFA homepage, pafa.edu
- PAFA's main number, **215-972-7600** – An outgoing message advising of a close or delay will be recorded by 6:30 a.m.
- KYW (1060AM) – Listen for PAFA's code **150** (Continuing Education's code is **2150**)
- WPVI-TV 6ABC – Lists the school by name
- NBC 10 – Lists the school by name

TRANSPORTATION AND PARKING

PAFA is conveniently located near the SEPTA Market East and Suburban train stations, bus and trolley stops and PATCO Hi-Speed Line station stops. For SEPTA information, call **215-580-7800** or visit septa.org. For PATCO information, visit ridepatco.org. Discounted parking is available at adjacent Parkway Corporation and Convention Center Parking garages and lots. Tickets must be validated by Security staff.

REGISTRATION FORM *Spring 2015*

■ **REGISTRATION BEGINS DEC. 8** 37
 ■ See page 35 for registration deadlines
 ■ Late registrations will incur a \$25 late fee

Date _____ Date of Birth _____
 Last Name _____ First Name _____ Middle Initial _____
 Address _____ City _____ State _____ Zip _____
 Phone (day) _____ Phone (evening/cell) _____ Email _____

Course #	Title	Day/Time	Instructor	Tuition	Lab/Mat Fee	Total

METHOD OF PAYMENT

VISA Mastercard AmEx Discover Check* # _____ Cash

Name on Credit Card _____

Credit Card Number _____

Expiration Date _____

Signature _____

I agree to abide by the policies and regulations in printed materials and on the website of Continuing Education Programs at PAFA. I have read and understand policies regarding credits, withdrawals, refunds and course cancellations (pages 34 - 35)

Signature (required) _____

Date _____

Tuition Total	
Locker	
Sub Total	
Discount*	
CE Community Scholarship Donation**	
TOTAL	

* PAFA Members at the Friends level and above receive a 10% tuition discount
 ** See page 35

Have you taken a class here before? Yes No

How did you find out about us?

- Internet (What site?) _____
- Radio (What station?) _____
- Newspaper/magazine _____
- Other (Please specify) _____

How did you receive this catalogue?

Mailed to me Picked it up at: _____

Are you an PAFA member? Yes No

PAFA Membership Level _____

Expiration Date _____

Please check if you would like more information about PAFA Academic Programs

- Certificate Bachelor of Fine Arts
- Master of Fine Arts Post-Baccalaureate

I wish to enroll in the CE Core Curriculum Program

For K-12 educators

I am taking a course for Act 48 credit or New Jersey Dept of Ed Professional Development Credit

PA Professional Educator I.D.# _____

For Office Use: Class Book _____ Materials _____ Database _____

ACADEMIC PROGRAMS

PAFA offers a variety of programs to help you meet your artistic goals. For more information, please contact the Office of Admissions at admissions@pafa.edu or 215-972-7625.



CERTIFICATE PROGRAM

At the heart of the PAFA's educational programs is the Certificate Program, a four-year curriculum of intense studio education that offers five majors: Painting, Drawing, Printmaking, Sculpture, and Illustration (new for Fall 2015).

BACHELOR OF FINE ARTS

PAFA offers two choices for students wishing to pursue an undergraduate degree program: the Academy BFA and the Coordinated BFA program with the University of Pennsylvania. Academy BFA students study exclusively at PAFA, taking both studio arts and the liberal arts component offered by the Academy. Students also have the choice of enrolling in the Certificate Program and earning a Bachelor of Fine Arts degree from the University of Pennsylvania.

FOR CONTINUING EDUCATION STUDENTS CONSIDERING MATRICULATION INTO THE CERTIFICATE PROGRAM

Select courses taken in the Continuing Education Program may be evaluated for transfer into the Certificate Program, based on satisfactory completion of coursework and a review of the student's portfolio. If approved, a maximum of 15 credits may be accepted as transfer credits. For more information, contact the Office of Admissions at 215-972-7625 or via email at admissions@pafa.edu.

POST-BACCALAUREATE CERTIFICATE IN GRADUATE STUDIES

This is an individually designed, one-year program of study for those who wish to develop their artistic skills, further their formal education, and be competitive for admission to graduate degree programs. This studio-based program offers formal drawing and seminar classes as well as private and group critiques with an excellent faculty.

MASTER OF FINE ARTS PROGRAM

This two-year, studio-based program allows fine artists to realize their creative potential while providing a solid intellectual and practical foundation for artistic expression. Students are encouraged to achieve independent aesthetic development through a broad variety of desired approaches.

LOW-RESIDENCY

MASTER OF FINE ARTS PROGRAM

Similar to the traditional MFA, the Low-Residency program focuses on independent studio work and is interdisciplinary in nature, however it does so with a combination of both on-site and off-site learning. The core of the program is three summer terms completed on the PAFA campus. These intensive, eight-week sessions include studio and seminar courses, regular studio visits, group critiques, and an outstanding roster of visiting artists. During the fall and spring terms, students are off-site and engage in a vital online community with virtual studios, critic meetings, and courses in art history, contemporary art, theory, writing and professional practices.

PAFA ADMISSIONS INFORMATION SESSION & PORTFOLIO REVIEW

Saturday, January 31. *See page 8.*



COMING THIS SUMMER



MASTER CLASS WITH JAN BALTZELL

Join acclaimed artist and PAFA faculty member Jan Baltzell to explore the varied paths from direct observation toward abstraction and invention. Baltzell's own painterly abstractions display a master's control of contrasting markmaking that transcends the viewer's conventional vocabulary.

June 12, 13 & 14

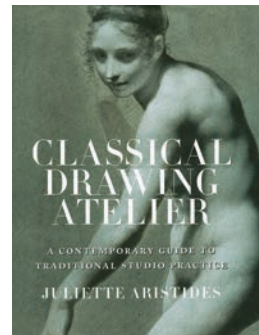
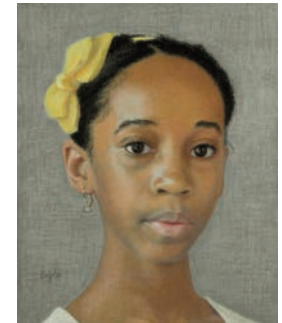
Jan Baltzell, *Untitled*, 2011. Oil on mylar, 28 x 25 in.

PORTRAIT PAINTING IN PASTEL WITH ELLEN EAGLE

Ellen Eagle is the author of *Pastel Painting Atelier*, published by Watson-Guptill. She teaches pastel at the Art Students League in New York, and she is represented by Forum Gallery. If you wish to make portrait painting in pastel a significant part of your artistic endeavor, or if you wish to employ pastel as a means to deepen your understanding of color, this workshop will strengthen your foundation.

June 15 - 19

Ellen Eagle, *Portrait of the Young Artist Marela Alvarez*, 2014. Pastel on pumice board, 9 1/4 x 11 1/8 in.



MASTER CLASS WITH JULIETTE ARISTIDES

Learn to accurately and confidently draw the human figure with Juliette Aristides, renowned artist, founder and instructor of the Classical Atelier at the Gage Academy of Fine Art and noted author of *Classical Drawing Atelier* and other highly regarded drawing and painting texts. Open to all levels, this workshop will teach students to draw the figure's essential structure in order to create a strong foundation for value and form.

June 20 & 21

Juliette Aristides, *Classical Drawing Atelier: A Contemporary Guide to Traditional Studio Practice*. New York: Watson-Guptill, 2006.



SUMMER ACADEMY FOR TEACHERS

Designed to invigorate your artistic practice and provide a reserve of project ideas for the new school year.

July 20 - 24

Visit pafa.edu/SummerAcademyForTeachers

SIX-WEEK STUDIO CRITIQUE PROGRAM

Designed for artists and educators who desire constructive feedback on their artwork as well as the support and interaction of an artistic community.

July 6 - August 14

Visit pafa.edu/CE





PENNSYLVANIA ACADEMY
OF THE FINE ARTS

CONTINUING EDUCATION PROGRAMS

128 North Broad Street
Philadelphia, PA 19102
t 215-972-7632 f 215-569-0153
e continuing@pafa.edu
www.pafa.edu/CE



@PAFAAcademy

IMPORTANT: DATED MATERIAL - DELIVER IMMEDIATELY

ADDRESS UPDATE:

- Please change my address as indicated.
- Please remove my name from the mailing list.
- I am receiving duplicates.

Please enclose the address to the right.

Non-Profit Org
U.S. Postage
PAID
Philadelphia, PA
Permit No. 2879