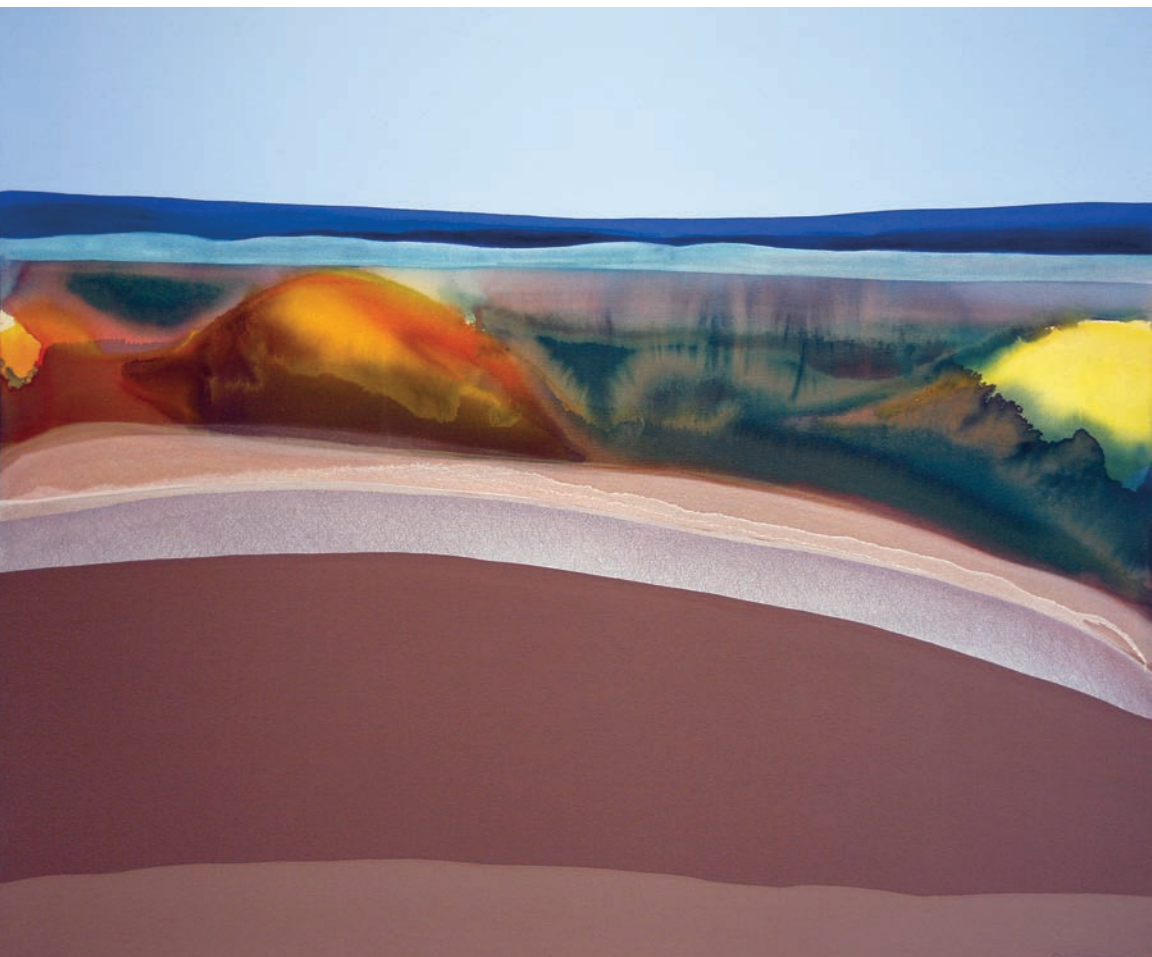


Pennsylvania Academy  
*of the Fine Arts*



**CONTINUING EDUCATION PROGRAMS**  
**ART CLASSES FOR ADULTS AND**  
**HIGH SCHOOL STUDENTS**

Fall 2019

**PAFA**

Pennsylvania Academy of the Fine Arts

# CONTINUING EDUCATION PROGRAMS

*Join our community of dedicated artists of all ages and skill levels*



**FOUNDED IN 1805 AS THE NATION'S FIRST SCHOOL AND MUSEUM OF FINE ARTS,** the Pennsylvania Academy of the Fine Arts (PAFA) promotes the transformative power of art and art making. As part of this mission, PAFA Continuing Education (CE) programs offer a diverse array of studio art courses, workshops and programs for adults and high school students, open to all levels of ability, from absolute beginner through advanced artist. Whether you've never taken an art class before, are returning after a long absence, or are preparing a portfolio for applying to art school, PAFA CE has something for you!

**PAFA.EDU/CE**

Search and view courses, learn about faculty, view policy information, and find out about special events and programs.



**ON THE  
COVER**

Elizabeth Osborne, *Southwind*, 1972,  
acrylic on canvas, 55 x 65 inches.  
Courtesy of the artist and Locks Gallery.

# PAFA

Pennsylvania Academy  
of the Fine Arts

## CONTINUING EDUCATION PROGRAMS

128 North Broad Street, Philadelphia, PA 19102

t 215-972-7632 f 215-569-0153

e [continuinged@pafa.edu](mailto:continuinged@pafa.edu)

[www.pafa.edu/CE](http://www.pafa.edu/CE)

   @PAFAcademy

# CE OPPORTUNITIES

## CONTINUING EDUCATION (CE) CERTIFICATE PROGRAMS

Designed for the serious student-artist, PAFA Continuing Education now presents Certificate Programs to enhance your technical skills and professional presence through a curriculum of focused study under the guidance of expert faculty-artists. Whether seeking to boost your personal or professional studio practice, build a foundation for undergraduate or graduate arts study, or lay the groundwork for a variety of arts-related occupations, PAFA's unparalleled fine arts instruction will propel you toward your artistic goals.

- The CE Core Curriculum Certificate
- The CE Certificate in Figure Studies: The Eakins Legacy

### LEARN MORE AND APPLY NOW!

Visit [pafa.edu/CEcertificates](https://pafa.edu/CEcertificates) for more information and application requirements.

Fall Application Deadline: **SEPTEMBER 6**

## OPEN ACADEMY

Continuing Education (CE) and non-matriculated students now have the opportunity to take PAFA BFA and Post-Baccalaureate courses for credit or non-credit through the Open Academy. PAFA's renowned studio arts program emphasizes excellence in technical skills and creative expression in painting, drawing, sculpture, printmaking and illustration. Liberal Arts courses offer students the opportunity to pursue studies in the humanities, in order to enhance their artistic abilities with critical thinking. Open Academy students enrolled in BFA/Post Baccalaureate courses gain a firm grounding in studio arts skills and liberal arts studies from master artist-teachers, while working amongst dedicated full-time PAFA students.

### LEARN MORE AND APPLY NOW!

Visit [pafa.edu/openacademy](https://pafa.edu/openacademy) for more information.

Fall course listings will be available by August 2

Fall Application Deadline: **AUGUST 21**



# REGISTRATION INFORMATION

Fall Semester dates: **SEPTEMBER 19 – DECEMBER 15**  
Registration opens: **AUGUST 5**  
Online pre-registration: **JULY 29** *(subject to change)*  
Registration deadline for courses beginning September 19 – 25: **SEPTEMBER 13**  
Thanksgiving Break: **NOVEMBER 28 – DECEMBER 1** *(no classes held)*

## 4 WAYS TO REGISTER

Register early to guarantee enrollment and prevent course cancellations.

- 1. ONLINE:** [www.pafa.edu/ce](http://www.pafa.edu/ce)
- 2. PHONE:** 215-972-7632
- 3. MAIL\*:** Continuing Education Programs  
Pennsylvania Academy  
of the Fine Arts  
128 North Broad Street  
Philadelphia, PA 19102
- 4. IN PERSON:** Visit the Continuing Education office on the 3rd Floor of the Samuel M.V. Hamilton Building

*\*Download a registration form from the website. Make checks or money orders payable to “PAFA.”*

## TUITION & FEES

See individual course descriptions.

## TUITION ASSISTANCE AVAILABLE

PAFA Continuing Education is pleased to provide tuition assistance to students who demonstrate financial need and dedication to their art through CE Community Scholarships.

**Application Deadline: SEPTEMBER 6**

*CE Community Scholarships are made possible in part by a generous contribution from the Dry Family Foundation. Download an application at [pafa.edu/ce-discountandscholarships](http://pafa.edu/ce-discountandscholarships) or call 215-972-7632.*

## DISCOUNTS

■ **Membership Discount**  
PAFA Members at the Friend level and above or the Young Friend Philanthropist level receive a 10% tuition discount on all CE courses, workshops and Master Classes.

■ **Referral Discount**  
If you are a current CE student or new student, and you refer a first-time Continuing Education student, you both will receive a 10% tuition discount on one regular course or workshop within the current semester (excludes Master Classes).

## VISIT PAFA.EDU/CE

for complete registration information including tuition, fees, academic credit, professional development credit for educators, discounts, tuition assistance, refund policies, parking, and more!

## CONTACT US

- **PHONE:** 215-972-7632
- **EMAIL:** [continuinged@pafa.edu](mailto:continuinged@pafa.edu)
- **VISIT:** 3rd Floor/Hamilton Building  
Monday – Thursday .....9 a.m. – 6:30 p.m.  
Friday .....9 a.m. – 4 p.m.  
Saturday .....8:30 a.m. – 1:30 p.m.

**A GIFT CERTIFICATE FOR A COURSE OR WORKSHOP MAKES A GREAT GIFT!**  
Call 215-972-7632 for more details.



# MASTER CLASSES AND WORKSHOPS

## MASTER CLASS WITH STUART SHILS: THE LIFE STUDIO AS PAINTED AND PERCEPTUAL SPACE

Friday – Sunday, October 25, 26 & 27  
8:30 a.m. – 4:30 p.m.  
\$750 non-credit



## CHARLES WILSON PEALE AND NATURAL HISTORY ILLUSTRATION WITH KATE SAMWORTH

Friday, October 11  
9 a.m. – 5 p.m.  
\$195 non-credit

## AVIAN DRAWING WITH PATRICIA TRAUB

Thursday and Friday, October 17 & 18  
10 a.m. – 3 p.m.  
\$350 non-credit

## MASTER CLASS WITH ELIZABETH OSBORNE

Saturday and Sunday, November 2 & 3  
9 a.m. – 5 p.m.  
\$495 non-credit

## INTUITIVE PAINTING WITH JANE DAVIES

Saturday and Sunday, November 16 & 17  
9 a.m. – 5 p.m.  
\$495 non-credit

Patricia Traub, Study for *Waiting for Something to Move*,  
charcoal, pastel, white conté on wove paper, 14 x 12 in.

# PRE-COLLEGE PORTFOLIO PREPARATION

## DRAWING

*Michelle Oosterbaan*

10 weeks, Saturdays, September 28 – December 7  
9 a.m. – 12 p.m.  
\$425 for 1.0 undergraduate credit or non-credit

## PRINTMAKING

*Shushana Rucker*

10 weeks, Saturdays, September 28 – December 7  
9 a.m. – 12 p.m.  
\$425 for 1.0 undergraduate credit or  
non-credit + \$10 lab fee

## PAINTING

*David Wilson*

10 weeks, Saturdays, September 28 – December 7  
12:30 – 3:30 p.m.  
\$425 for 1.0 undergraduate credit or non-credit

## INTRODUCTION TO ILLUSTRATION

*James Heimer*

10 weeks, Saturdays, September 28 – December 7  
12:30 – 3:30 p.m.  
\$425 for 1.0 undergraduate credit or non-credit



## SCHOLARSHIPS AVAILABLE!

Visit [pafa.edu/highschool-saturdays](http://pafa.edu/highschool-saturdays)  
for more information.

# PAINTING

## IN-DEPTH WATERCOLOR

*James Toogood*

Section 1: 10 weeks, Fridays,  
October 4 – December 13 (*no class on November 29*)  
Section 2: 10 weeks, Mondays,  
October 7 – December 9  
9 a.m. – 1:30 p.m.  
\$595 non-credit; \$950 for 1.5 undergraduate credits

## INTRODUCTION TO OIL PAINTING

*Shushana Rucker*

12 weeks, Mondays, September 23 – December 9  
6 – 9 p.m.  
\$495 non-credit or \$625 for 1.0 undergraduate credit

## LIFE PAINTING AND DRAWING

*Douglas Martenson*

12 weeks, Tuesdays, September 24 – December 10  
9 a.m. – 12 p.m.  
\$495 non-credit or \$625 for 1.0 undergraduate  
credit + \$15 model fee

## THE BASICS OF COLOR

*Jill A. Rupinski*

8 weeks, Tuesdays, October 1 – November 19  
9 a.m. – 1 p.m.  
\$395 non-credit or \$525 for 1.0 undergraduate credit

## PHOTO-REALISTIC PAINTING

*Alicia Mino Gonzalez*

(Bilingual instructor: English & Spanish)  
12 weeks, Tuesdays, September 24 – December 10  
6 – 9 p.m.  
\$495 non-credit or \$625 for 1.0 undergraduate credit

## THE PAFA ATELIER

*Peter Van Dyck & Carolyn Pyfrom*

14 weeks, Wednesdays, September 11 – December 11  
9 a.m. – 2 p.m.: *Instruction, critique & discussion*  
2 – 4 p.m.: *Independent study*  
\$850 non-credit or \$1,100 for  
1.5 undergraduate credits

## INTRODUCTION TO THE PAFA ATELIER: FUNDAMENTALS OF REPRESENTATIONAL DRAWING & PAINTING **NEW!**

*Carolyn Pyfrom & Peter Van Dyck*

14 weeks, Wednesdays, September 11 – December 11  
9 a.m. – 12 p.m.  
\$595 non-credit or \$950 for 1.5 undergraduate credits

## PAINTING OVER THE LINE

*Kassem Amoudi*

12 weeks, Wednesdays, September 25 – December 11  
12:30 – 3:30 p.m.  
\$495 non-credit or \$625 for 1.0 undergraduate credit

## WATERCOLOR FUNDAMENTALS

*Allison Syvertsen*

10 weeks, Wednesdays, October 2 – December 4  
6 – 9 p.m.  
\$395 non-credit or \$525 for 1.0 undergraduate credit

## PAINTING WITH OPEN ACRYLICS **NEW!**

*Joseph Sweeney*

10 weeks, Thursdays, October 3 – December 12  
9 a.m. – 12 p.m.  
\$395 non-credit or \$525 for 1.0 undergraduate credit  
+ \$15 model fee

## PORTRAIT PAINTING

*Theodore Xaras*

12 weeks, Thursdays, September 19 – December 12  
12:30 – 3:30 p.m.  
\$495 non-credit or \$625 for 1.0 undergraduate  
credit + \$15 model fee

## MINDFUL ART-MAKING

*Dona Duncan*

10 weeks, Thursdays, October 3 – December 12  
12:30 – 3:30 p.m.  
\$395 non-credit



Photo: Alicia Mino Gonzalez

# PAINTING



## PORTRAIT PAINTING

*Meghan Cox*

12 weeks, Saturdays, September 21 – December 14  
12:30 – 3:30 p.m.

\$495 non-credit or \$625 for 1.0 undergraduate credit  
+ \$15 model fee

## SECRETS OF REALISTIC PAINTING **NEW!**

*Robert Waddington*

12 weeks, Saturdays, September 21 – December 14  
12:30 – 3:30 p.m.

\$495 non-credit or \$625 for 1.0 undergraduate credit

## EXPRESSIVE ACRYLIC PAINTING **NEW!**

*Alicia Mino Gonzalez*

(Bilingual instructor: English & Spanish)

6 weeks, Sunday, November 3 – December 15  
10 a.m. – 1 p.m.

\$250 non-credit + \$20 materials fee  
(includes all materials)

## FLOWER PAINTING WORKSHOP

*Dori Spector*

Saturday & Sunday, September 28 & 29  
9 a.m. – 4 p.m.

\$175 non-credit

## TEMPERA PAINTING WORKSHOP

*Anthony Ciambella*

Saturday & Sunday, October 19 & 20  
9 a.m. – 4 p.m.

\$175 non-credit plus + \$10 materials fee

## BEGINNING OIL PAINTING WORKSHOP

*Aubrey Levinthal*

Saturday and Sunday, November 9 & 10  
9 a.m. – 5 p.m.

\$195 non-credit + \$25 materials fee  
(includes all materials)

## WATERCOLOR WORKSHOP

*James Toogood*

Saturday and Sunday, November 16 & 17  
9 a.m. – 5 p.m.

\$195 non-credit

# PHOTOGRAPHY

## PINHOLE PHOTOGRAPHY

*RA Friedman*

3 weeks, Saturdays, October 12 – 26  
9 a.m. – 12 p.m.

\$125 non-credit + \$15 materials fee  
(includes all materials)

## PHOTOGRAPHING YOUR ARTWORK **NEW!**

*Adrian Cubillas*

Saturday & Sunday, December 7 & 8  
9 a.m. – 5 p.m.

\$195 non-credit

**THANKSGIVING BREAK: NOVEMBER 28 – DECEMBER 1** (no classes held)

# DRAWING

## INTERMEDIATE DRAWING **NEW!**

*Frederic Kaplan*

12 weeks, Tuesdays, September 24 – December 10

12:30 – 3:30

\$495 non-credit or \$625 for 1.0 undergraduate credit + \$15 model fee

## EDITORIAL ILLUSTRATION **NEW!**

*James Heimer*

10 weeks, Tuesdays, October 1 – December 3

6 – 9 p.m.

\$395 non-credit for \$525 for 1.0 undergraduate credit

## BOTANICAL DRAWING & PAINTING

*Linda Gist*

8 weeks, Wednesdays, October 2 – November 20

9 a.m. – 1:30 p.m.

\$495 non-credit or \$625 for 1.0 undergraduate credit + \$10 materials fee

## DRAWING FUNDAMENTALS

*Phyllis Laver*

12 weeks, Tuesdays, September 24 – December 10

6 – 9 p.m.

\$495 non-credit or \$625 for 1.0 undergraduate credit

## DRAWING WITH COLOR PENCIL

*Michelle Oosterbaan*

10 weeks, Thursdays, October 3 – December 12

6 – 9 p.m.

\$395 non-credit or \$525 for 1.0 undergraduate credit

## STUDIO ANATOMY **NEW!**

*Roberto Osti*

12 weeks, Fridays, September 20 – December 13

9 a.m. – 12 p.m.

\$495 non-credit or \$625 for 1.0 undergraduate credit + \$15 model fee

## LIFE DRAWING II

*John Horn*

12 weeks, Saturdays, September 21 – December 14

9 a.m. – 12 p.m.

\$495 non-credit or \$625 for 1.0 undergraduate credit + \$15 model fee

## BEGINNING DRAWING: THE PORTRAIT

*Allison Syvertsen*

10 weeks, Saturdays, September 28 – December 7

9 a.m. – 12 p.m.

\$395 non-credit or \$525 for 1.0 undergraduate credit

## PASTEL DRAWING WORKSHOP

*Joseph Sweeney*

Saturday, October 5

9 a.m. – 4 p.m.

\$95 + \$10 materials fee (*includes all materials*)

## BEGINNING DRAWING WORKSHOP

*Fred Kaplan*

Saturday and Sunday, October 12 & 13

9 a.m. – 4 p.m.

\$175 non-credit + \$10 materials fee  
(*includes all materials*)



## CRITIQUE

### GROUP CRITIQUE WITH YING LI & EVAN FUGAZZI

Saturday, December 14

Begins at 9 a.m.

\$95 non-credit



# PRINTMAKING

## WOODCUT AND RELIEF PRINTMAKING

*Ronald Wyffels*

12 weeks, Tuesdays, September 24 – December 10  
1 – 4 p.m.

\$495 non-credit or \$625 for 1.0 undergraduate  
credit + \$20 lab fee

## LITHOGRAPHY

*Ronald Wyffels*

12 weeks, Wednesdays, September 25 – December 11  
1 – 4 p.m.

\$495 non-credit or \$625 for 1.0 undergraduate  
credit + \$20 lab fee

## HIGHLIGHTS OF PRINTMAKING HISTORY

*Tony Rosati*

5 weeks, Wednesdays, October 2 - 30  
1 – 4 p.m.

\$150 non-credit

## SUSTAINABLE PRINTMAKING **NEW!**

*Shushana Rucker*

12 weeks, Thursdays, September 19 – December 12  
6 – 9 p.m.

\$495 non-credit or \$625 for 1.0 undergraduate  
credit + \$20 lab fee

## SCREENPRINTING AND BEYOND

*Lisa Hamilton*

12 weeks, Fridays, September 20 – December 13  
9 a.m. – 12 p.m.

\$495 non-credit or \$625 for 1.0 undergraduate  
credit + \$20 lab fee

## MONOPRINT/ETCHING

*Tony Rosati*

12 weeks, Saturdays, September 21 – December 14  
9 a.m. – 12 p.m.

\$495 non-credit or \$625 for 1.0 undergraduate  
credit + \$20 lab fee

## LITHOGRAPHY WORKSHOP **NEW!**

*Peter Haarz*

Saturday and Sunday, October 26 & 27  
9 a.m. – 5 p.m.

\$195 non-credit + \$25 materials fee  
(includes most materials)

## CROSSING BOUNDARIES: SCREENPRINT & INTAGLIO **NEW!**

*Lisa Hamilton*

Saturday & Sunday, November 2 & 3  
9 a.m. – 5 p.m.

\$195 non-credit + \$10 materials fee

# OTHER MEDIA

## PAPERMAKING **NEW!**

*Nicole Donnelly*

12 weeks, Mondays, September 23 – December 9  
6 – 9 p.m.

\$495 non-credit or \$625 for 1.0 undergraduate  
credit + \$50 materials fee (includes most materials)

## INTRODUCTION TO CALLIGRAPHY **NEW!**

*Ron Little*

6 weeks, Tuesdays, October 1 – November 5  
6 – 9 p.m.

\$250 non-credit + \$25 materials fee

## COLLAGE MIXED MEDIA

*Anthony Ciambella*

Sunday, October 6  
9 a.m. – 5 p.m.

\$95 non-credit + \$10 materials fee

## IMPROVISATIONAL STITCHING

*Sheryl Kessler*

3 weeks, Saturdays, September 21 – October 5  
10 a.m. – 2 p.m.

\$195 + \$35 materials fee (includes basic materials)

## BOOKMAKING

*Alicia Mino Gonzalez*

(Bilingual instructor: English & Spanish)  
4 weeks, Sundays, September 29 – October 20  
10 a.m. – 1 p.m.

\$195 non-credit + \$20 materials fee  
(includes all materials)

## POP-UP HOLIDAY CARDS

*Alicia Mino Gonzalez*

(Bilingual instructor: English & Spanish)  
Sunday, October 27  
10 a.m. – 4 p.m.

\$75 non-credit + \$20 materials fee  
(includes all materials)

## MINDFUL STITCHING:

## STITCHING IN THE MOMENT **NEW!**

*Sheryl Kessler & Jennifer Schelter*

Saturday, November 23

10 a.m. – 5 p.m.

\$95 + \$15 materials fee (includes most materials)

# SCULPTURE

## INTRODUCTION TO STONE CARVING **NEW!**

*Morgan Dummitt*

12 weeks, Mondays, September 23 – December 9  
6 – 9 p.m.

\$495 non-credit or \$625 for 1.0 undergraduate credit  
+ \$40 materials fee (*includes stone*)

## TERRA COTTA FIGURE SCULPTURE

*Colleen O'Donnell*

12 weeks, Wednesdays, September 25 – December 11  
12:30 – 3:30 p.m.

\$495 non-credit or \$625 for 1.0 undergraduate credit  
+ \$15 model fee

## WOOD STUDIO **NEW!**

*John Grieg*

12 weeks, Wednesdays, September 25 – December 11  
6 – 9 p.m.

\$495 non-credit or \$625 for 1.0 undergraduate credit  
+ \$20 lab fee

## FOUNDRY: AN INTRODUCTION

*Pavel Efremoff*

12 weeks, Thursdays, September 19 – December 12  
6 – 9:30 p.m.

\$595 non-credit or \$950 for 1.5 undergraduate credits  
+ \$65 lab fee

## STONE CARVING

*Steve Nocella*

12 weeks, Saturdays, September 21 – December 14  
9 a.m. – 12 p.m.

\$495 non-credit or \$625 for 1.0 undergraduate credit  
+ \$10 lab fee

## METAL SCULPTURE

*Steve Nocella*

12 weeks, Saturdays, September 21 – December 14  
12:30 – 3:30 p.m.

\$495 non-credit or \$625 for 1.0 undergraduate credit  
+ \$65 lab fee

## FIGURE AND PORTRAIT MODELING

*John Horn*

12 weeks, Saturdays, September 21 – December 14  
12:30 – 3:30 p.m.

\$495 non-credit or \$625 for 1.0 undergraduate credit  
+ \$15 model fee

## DIRECT WAX CONSTRUCTION

### WORKSHOP **NEW!**

*Diane Collins*

Saturday and Sunday, October 19 & 20

9 a.m. – 5 p.m.

\$195 non-credit + \$35 materials fee

## FIGURE AND PORTRAIT SCULPTURE WORKSHOP

*Colleen O'Donnell*

Saturday and Sunday, November 9 & 10

9 a.m. – 5 p.m.

\$195 non-credit + \$10 model fee

## 3-D PRINTING WORKSHOP **NEW!**

*Robert Roesch*

Saturday and Sunday, December 7 & 8

9 a.m. – 5 p.m.

\$195 non-credit



# LANDSCAPE

## PLEIN AIR PAINTING IN CAPE MAY

*Joe Sweeney*

Thursday – Sunday, September 5 – 8

Times variable

\$595 non-credit

## THE LANDSCAPE SKETCH

*Roger Chavez*

6 weeks Thursdays, September 26 – October 31

10 a.m. – 3 p.m.

\$395 non-credit or \$525 for 1.0 undergraduate credit

## SKETCH ON THE GO

*Frederic Kaplan*

Saturday, September 28 (rain date: October 5)

9 a.m. – 5 p.m.

\$95 non-credit

## PLEIN AIR DRAWING AND PAINTING

*Larry Francis*

6 weeks, Sundays, September 22 – October 27

9 a.m. – 2 p.m.

\$395 non-credit or \$525 for 1.0 undergraduate credit

## THE PENNSYLVANIA LANDSCAPE TRADITION: NEW HOPE

*Joseph Sweeney*

6 weeks, Wednesdays, October 2 – November 6

10 a.m. – 3 p.m.

\$395 non-credit or \$525 for 1.0 undergraduate credit



Photo: Joe Sweeney

# ONLINE COURSES

## BEGINNING DRAWING

*Meghan Cox*

10 weeks, October 7 – December 15

\$395 non-credit or \$525 for 1.0 undergraduate credit

## OBSERVATIONAL PERSPECTIVE DRAWING

*Frederic Kaplan*

10 weeks, October 7 – December 15

\$395 non-credit or \$525 for 1.0 undergraduate credit

## WATERCOLOR:

### DEPICTING THE NATURAL WORLD **NEW!**

*Roberto Osti*

10 weeks, October 7 – December 15

\$395 non-credit or \$525 for 1.0 undergraduate credit

## COLOR FOR PAINTERS

*Al Gury*

10 weeks, October 7 – December 15

\$395 non-credit or \$525 for 1.0 undergraduate credit

## THE PORTABLE PRINT

*Shushana Rucker*

10 weeks, October 7 – December 15

\$395 non-credit or \$525 for 1.0 undergraduate credit

## INTRODUCTION TO DIGITAL PHOTOGRAPHY **NEW!**

*RA Friedman*

10 weeks, October 7 – December 15

\$395 non-credit or \$525 for 1.0 undergraduate credit

## MODERNISM AND MODERNITY: ART AND CULTURE, 1900-1945

*Dr. Kevin Richards*

10 weeks, October 7 – December 15

\$395 non-credit or \$950 for 1.5 undergraduate credit

## ART APPRECIATION: A GLOBAL PERSPECTIVE

*Jacob Muldowney*

10 weeks, October 7 – December 15

\$395 non-credit or \$525 for 1.0 undergraduate credit

## PICTURING BENJAMIN FRANKLIN **NEW!**

*Dr. Paul Sivitz*

5 weeks, October 28 – November 25

Optional in-person session:

November 16, 10 a.m. – 4 p.m.

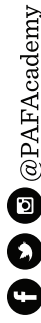
\$195 non-credit or \$525 for 1.0 undergraduate credit



Non-Profit Org  
U.S. Postage  
**PAID**  
Philadelphia, PA  
Permit No. 2879

**CONTINUING EDUCATION PROGRAMS**

128 North Broad Street  
Philadelphia, PA 19102  
t 215-972-7632 f 215-569-0153  
e [continuing@pafa.edu](mailto:continuing@pafa.edu)  
[www.pafa.edu/ce](http://www.pafa.edu/ce)



**IMPORTANT: DATED MATERIAL – DELIVER IMMEDIATELY**

**ADDRESS UPDATE:**

- ☐ Please change my address as indicated.
- ☐ Please remove my name from the mailing list.
- ☐ I am receiving duplicates.

Please enclose the address to the right.