

## Brodsky Center at PAFA, Philadelphia

### Fall for Art: Affordable Collections

#### Checklist



**Alexandre Arrechea** (Cuban, b. 1970)  
*Chrysler*, 2012–2014  
Seven-color lithograph on paper  
24 1/2 x 22 1/2 inches  
Edition of 30. Published by the  
Brodsky Center at PAFA, Philadelphia.  
\$250



**Paul Brach** (American, 1924–2007)  
*The Eye Is the First Circle*, 2004  
Four-color etching and acquaint on  
Hahnemühle Copperplate Warm White paper  
22 x 28 inches  
Edition of 50. Published by the  
Brodsky Center at PAFA, Philadelphia.  
\$400



**Nancy Azara** (American, b. 1939)  
*Broken Leaf*, 2007  
Digital print in archival pigment ink with pochoir and  
hand lithography on Arches Infinity paper  
Edition of 60. Published by the  
Brodsky Center at PAFA, Philadelphia.  
\$600



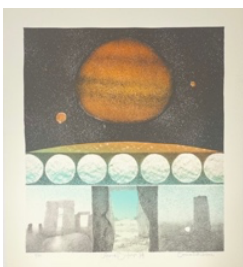
**Emily Brown** (American, b. 1943)  
*An Early Thaw*, 2003  
Lithograph on Rives BFK white paper  
18 x 15 inches  
Edition of 50. Published by the  
Philadelphia Print Collaborative and the  
Brodsky Center at PAFA, Philadelphia.  
\$400



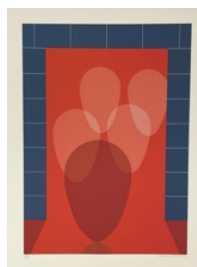
**Hetty Baiz** (American)  
*Frog*, 2011  
Digital inkjet print hand-drawn with ink on  
Japanese paper  
19 3/4 x 19 1/2 inches  
Edition of 5. Published by the  
Brodsky Center at PAFA, Philadelphia.  
\$200



**Joan Eda Byrd** (American, b. 1942)  
*I Must Get Away From Here*, 1998  
Lithography, handmade paper, pulp painting  
and chine collé on handmade paper  
16 x 20 inches  
Edition of 20. Published by the  
Brodsky Center at PAFA, Philadelphia.  
\$350



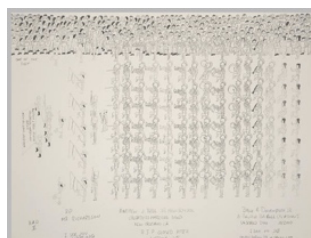
**Lynn Elton Baker** (American, b. 1949)  
*Bovine into Ursine*, 1974  
20 x 18 inches  
Eight-color lithograph on paper  
Edition III/VII. June Wayne Collection for the  
Brodsky Center at PAFA, Philadelphia.  
\$150



**Clarence Holbrook Carter** (American, 1904–2000)  
*Untitled*, 1978  
Lithograph on paper  
35 x 26 inches  
Edition of 188/200. Published by June Wayne Collection  
for the Brodsky Center at PAFA.  
\$750



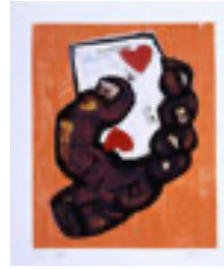
**Anita Bernarde** (American)  
*Wild Flowers*, 2011  
Monotype on paper with slight variations  
17 3/4 x 17 3/4 inches  
Edition of 5 variants. Published by the  
Brodsky Center at PAFA, Philadelphia.  
\$200



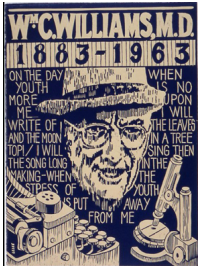
**Bruce Davenport Jr,**  
**aka Dapper Bruce Lafitte** (American, b. 1972)  
*For New Orleans Crusaders*, 2010  
Hand drawn single color lithograph on paper  
22 x 28 inches  
Edition of 15.  
\$600



**Bruce Davenport Jr, aka Dapper Bruce Lafitte** (American, b. 1972)  
*For New Orleans Purple Knights*, 2010  
 Hand drawn ten-color lithograph on paper  
 22 x 28 inches  
 Edition of 15.  
 \$600



**Charles Hewitt** (American, b. 1946)  
*Ace*, 2000  
 Digital inkjet print and woodcut on paper  
 20 x 24 inches  
 Edition of 20. Published by the Brodsky Center at PAFA, Philadelphia.  
 \$300



**Eduardo Fausti** (American, b. Argentina 1954)  
*Ode to William Carlos Williams*, 1997  
 Lithograph and woodcut on paper  
 26 1/2 x 19 1/2 inches  
 Edition of 10. Published by the Brodsky Center at PAFA, Philadelphia.  
 \$425



**Eve Ingalls** (American)  
*Fingering Instability*, 2002  
 Cast paper and yarn  
 58 x 27 x 5 1/2 inches  
 Edition of 30. Published by the Brodsky Center at PAFA, Philadelphia.  
 \$750



**Diana González Gandolfi** (American, b. Argentina 1951)  
*Missing Time*, 2001  
 Lithograph, chine collé, collograph, and monotype on paper  
 22 x 30 inches  
 Edition of 20. Published by the Brodsky Center at PAFA, Philadelphia.  
 \$400



**John Jodzio** (American, b.1975)  
*Untitled*, 2007  
 Lithograph with hand coloring on paper  
 22 1/2 x 30 inches  
 Edition of 20. Published by the Brodsky Center at PAFA, Philadelphia.  
 \$400



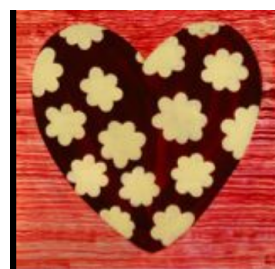
**Kate Dodd**  
*Roadside Attraction*, 1997  
 Handmade paper  
 19 x 16 inches  
 Edition of 10. Published by the Brodsky Center at PAFA, Philadelphia.  
 \$150



**Tiko Kerr** (Canadian, b. 1953)  
*Duet*, 2007  
 Six-color silkscreen on Arches 88 paper  
 22 1/2 x 30 inches  
 Edition of 50, plus edition BCI of 10. Published by the Brodsky Center at PAFA, Philadelphia.  
 \$450



**Carol Hanson** (American)  
*Untitled*, 2011  
 Monoprint on paper  
 18 x 18 inches  
 Edition of 9 variants. Published by the Brodsky Center at PAFA, Philadelphia.  
 \$200



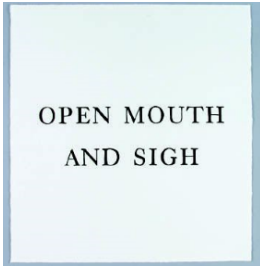
**Barbara Klein** (American)  
*Untitled*, 2011  
 Woodblock and lithograph on paper  
 12 x 10 inches  
 Edition BCI of 5. Published by the Brodsky Center at PAFA, Philadelphia.  
 \$150



**Barbara Klein** (American)  
*Untitled*, 2011  
 Woodblock and lithograph on paper  
 12 x 10 inches  
 Edition BCI of 5. Published by the  
 Brodsky Center at PAFA, Philadelphia.  
 \$150



**Caroline Lathan-Stiefel** (American)  
*Latch-On*, 2002  
 Lithograph  
 20 ½ x 13 1/5 inches  
 Edition of 20. Published by the  
 Brodsky Center at PAFA, Philadelphia.  
 \$450



**Janice Krasnow** (American)  
*Open Mouth and Sigh*, 2004  
 Two-run silkscreen  
 22.625 x 24 inches  
 Edition of 20. Published by the  
 Brodsky Center at PAFA, Philadelphia.  
 \$150



**Maria Lupo** (American)  
*Great Caution Needed*, 2000  
 Cast handmade paper  
 17 ½ x 23 inches  
 Edition of 20. Published by the  
 Brodsky Center at PAFA, Philadelphia.  
 \$150



**Hiroshi Kumagai**  
*Mach 300*, 2004  
 Unbleached Abaca and Cotton  
 20 x 16 inches  
 Edition of 20. Published by the  
 Brodsky Center at PAFA, Philadelphia.  
 \$200



**Eva Mantell** (American)  
*I didn't see anything*, 2007  
 Over beaten Abaca with over beaten Cotton with  
 double couched to trap a cut London Plane leaf  
 20 x 16 inches  
 Edition of 20. Published by the  
 Brodsky Center at PAFA, Philadelphia.  
 \$200



**Gary Lang** (American, b. 1950)  
*Target*, 1997  
 Pulp painting with handmade paper  
 16 x 13 ½ inches  
 Edition of 60. Published by the  
 Brodsky Center at PAFA, Philadelphia.  
 \$100



**Geanna Merola** (American)  
*Memory/Energy*, 1991  
 Lithography and etching  
 22 x 30 inches  
 Edition of 30. Published by the  
 Brodsky Center at PAFA, Philadelphia.  
 \$225



**Caroline Lathan-Stiefel** (American)  
*Untitled (Bottle Nipple)*, 2002  
 Lithograph  
 16 ¾ x 5 ¾ inches  
 Edition of 20. Published by the  
 Brodsky Center at PAFA, Philadelphia.  
 \$350



**Chuck Miley** (American, b.1943)  
*The Barong*, 2007  
 Silkscreen, pigment, and glitter in overbeaten cotton  
 pulp handmade paper  
 22 x 30 inches  
 Edition of 20. Published by the  
 Brodsky Center at PAFA, Philadelphia.  
 \$400

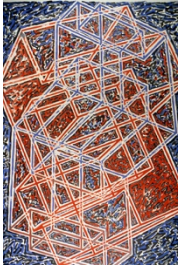




**Melissa Miller** (American, b.1951)  
*The Temptation of St. Anthony*, 1991  
 Eight-color lithograph on White Arches paper  
 30 x 22 inches  
 Edition of 81. Published by the  
 Brodsky Center at PAFA, Philadelphia.  
 \$300



**Joan Needham** (American)  
*Faringa*, 2011  
 Monoprint on light paper  
 18 x 18 inches  
 Edition of 6. Published by the  
 Brodsky Center at PAFA, Philadelphia.  
 \$300



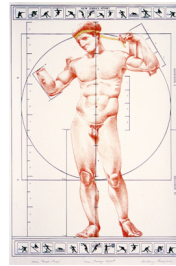
**Hiroshi Murata** (American, b. Japan 1941)  
*Lost in Space II*, 1989  
 Lithograph on paper  
 42 x 29 1/2 inches  
 Edition 1/22. Published by the  
 Brodsky Center at PAFA, Philadelphia.  
 \$400



**Nell Painter** (American, b. 1942)  
*Wise Woman Inside*, 2017  
 Relief and silkscreen print on Sekishu white paper  
 17 x 17 inches  
 Edition of 10. Published by the  
 Brodsky Center at PAFA, Philadelphia.  
 \$600



**Tom Nakashima** (American, b. 1941)  
*After Giotto Sanctuary*, 1994  
 Lithography, chine collé and gold leaf on paper  
 35 x 30 inches  
 Edition of 20. Published by the  
 Brodsky Center at PAFA, Philadelphia.  
 \$500



**Anthony Panzera** (American)  
*New Jersey Sport*, 1995  
 Lithography with gold leaf on paper  
 20 x 12 3/4 inches  
 Edition of 15. Published by the  
 Brodsky Center at PAFA, Philadelphia.  
 \$100



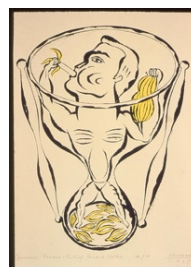
**Abdoulaye Ndoye** (Senegalese, b. 1951)  
*Parallelisme*, 1999  
 Two-color lithography with collage elements in Aiko Wood  
 Veneer paper on Fabriano Tiepolo or Arches Buff paper  
 30 x 22 inches  
 Edition of 15 variants. Published by the  
 Brodsky Center at PAFA, Philadelphia.  
 \$300



**John Patterson** (American)  
*Blind Faith*, 2001  
 Linoleum cut on handmade abaca paper with cotton  
 pulp painting  
 16 x 20 inches  
 Edition of 20. Published by the  
 Brodsky Center at PAFA, Philadelphia.  
 \$100



**Joan Needham** (American)  
*Farenga*, 2011  
 Monoprint on paper  
 18 x 18 inches  
 Edition of 2. Published by the  
 Brodsky Center at PAFA, Philadelphia.  
 \$300



**Sándor Rácmolnár** (Hungarian, b. 1960)  
*Guinness Banana-Eating Record Holder*, 1995  
 Silkscreen on paper  
 21 1/2 x 14 7/8 inches  
 Edition of 90. Published by the  
 Brodsky Center at PAFA, Philadelphia.  
 \$250



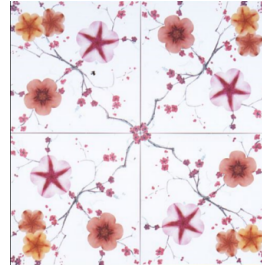
**Jon Rappleye** (American, b. 1968)  
*Season of Doubt*, 2002  
Photolithograph, woodcut, rubber stamping, and handcoloring on White Rives paper  
30 x 22 inches  
Edition of 20. Published by the Brodsky Center at PAFA, Philadelphia.  
\$700



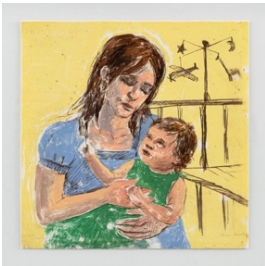
**Motsamai Thabane** (South African)  
*Hang in There (A Promise to...)*, 2007  
Relief on paper  
21 x 15 ¼ inches  
Edition of 10. Published by the Brodsky Center at PAFA, Philadelphia.  
\$100



**Jon Rappleye** (American, b. 1968)  
*Untitled*, 2009  
5-color lithograph and 6-color silkscreen on Stonehenge Crème paper  
30 x 22 inches  
Edition of 20. Published by the Brodsky Center at PAFA, Philadelphia.  
\$600



**Peter Whitney** (American)  
*Strange Attraction/Butterfly Effect*, 2000  
Three-color lithograph and digital print in archival pigment ink on Concorde Rag paper  
4 panels, 16 ¼ x 16 ¼ inches each, 32 ½ x 32 ½ inches overall  
Edition of 20. Published by the Brodsky Center at PAFA, Philadelphia.  
\$350



**Karen Raude** (Russian, b. 1972)  
*Untitled*, 2011  
Monoprint on paper  
18 x 18 inches  
Edition of 5 variants. Published by the Brodsky Center at PAFA, Philadelphia.  
\$150



**Karen Raude** (Russian, b. 1972)  
*Untitled*, 2011  
Monoprint on paper  
18 x 18 inches  
Edition of 5 variants. Published by the Brodsky Center at PAFA, Philadelphia.  
\$150



**Marc Rosenquist**  
*Untitled*, 1992  
Aquatint and hardground etching with spit bite and soft ground etching on paper  
22 ¼ x 15 inches  
Edition of 30. Published by the Brodsky Center at PAFA, Philadelphia.  
\$100